



# Placemaking: People First Place Second

**Katrina Johnston-Zimmerman**  
**Lindy Institute, Drexel University**  
@think\_katrina



DREXEL UNIVERSITY  
**Lindy Institute**  
for Urban Innovation

**Marisa Denker**  
**Connect the Dots**  
@ctd\_dublin



**Connect  
the Dots**



// Place  
without People?



// People First

// Place Second



**// People, but not a Place**



I

WHAT IS

PLACEMAKING?



// Design and Done



**// Street or Public Space?**



// Alley or outdoor living room?





**// Parking lot or People spot?**



# // Tactical Urbanism



STOPPING  
FROM  
TO  
TEMPORARY  
POLICE  
REGULATION  
VEHICLES WILL BE TOWED  
CITY OF PHILADELPHIA  
AUTHORIZED BY

CUSTOM METAL  
RESTORATION  
610-325-4594

Hope Joy

// PARK(ing) Day Pop-up



// Open Streets



**// Block Parties**



// Street Festivals



# PLACEMAKING PRINCIPLES



// Memory + Identity









// Sense of Place + Ownership







// Place + Programming







Slippery Rock  
in Bloom  
America  
into Bloom  
Planting pride  
In our communities!

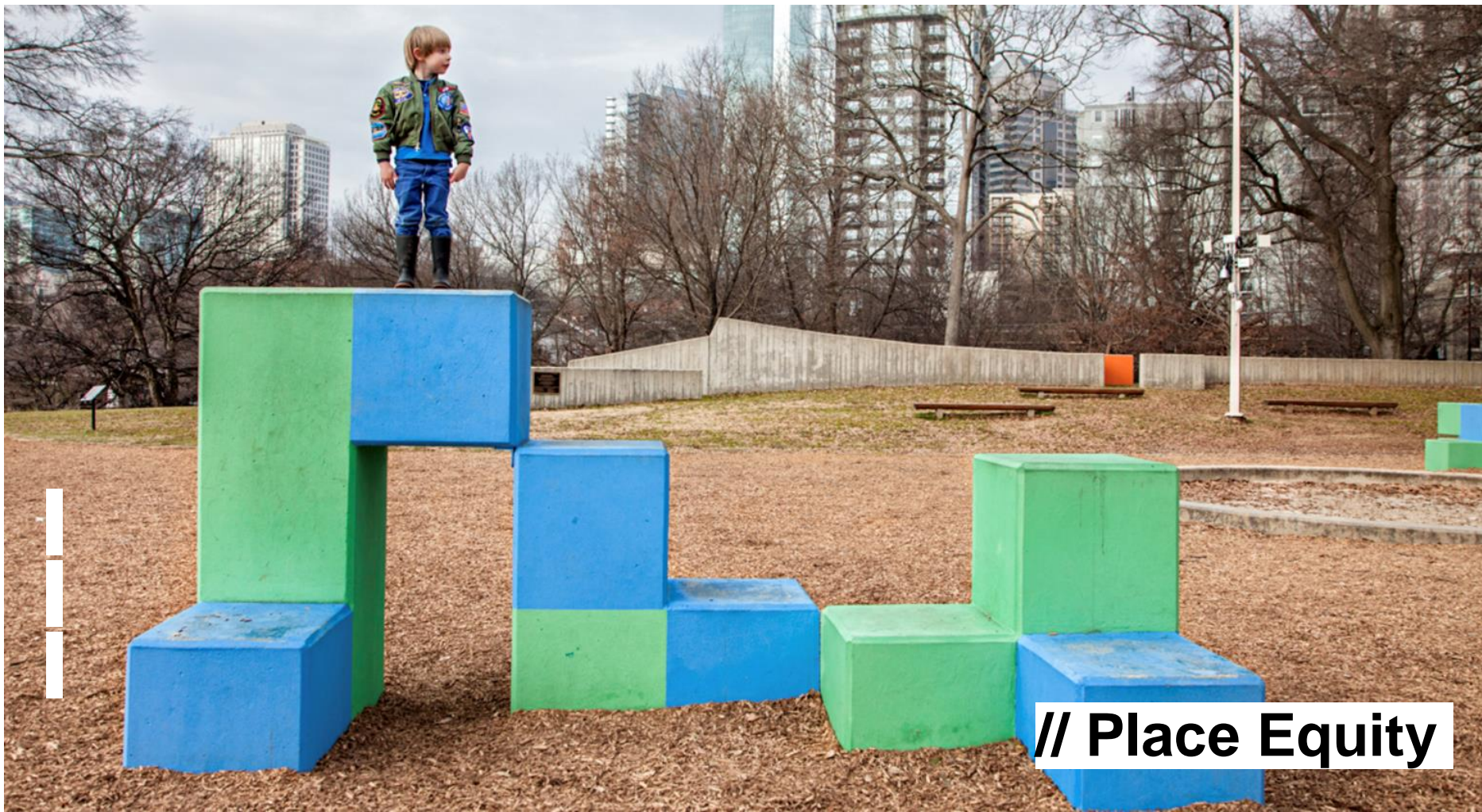
CREATED  
WITH  
REPURPOSED  
ITEMS  
RECYCLE - REPURPOSE - REUSE  
IT'S FUN!  
SLIPPERY ROCK  
IN BLOOM



// Place "branding"



// Place reality



**// Place Equity**




PLACEMAKING  
IS  
PEOPLE







# PEOPLE


 **Name:**  
**Role:**

About me:

I care about...

I am worried about...

I think the area could improve by...


 **Name:**  
**Role:**

About me:

I care about...

I am worried about...

I think the area could improve by...

 **Name:**  
**Role:**

About me:

I care about...

I am worried about...




I think the area could improve by...



A vibrant city street scene, likely in New York City, featuring a pedestrian plaza with red and yellow folding tables and chairs. People are sitting at the tables, some using laptops, while others walk past. The street is lined with multi-story buildings, including a storefront for 'MADURA PARIS 1871'. A large white tent is set up on the right side of the street. The text 'PLACEMAKING IS PLACE' is overlaid in large, white, bold letters across the center of the image.

# PLACEMAKING IS PLACE

# A LOOK AT ST BRIGID'S

-  Greenery
-  Connecting Infrastructure
-  Vacant Architecture

River

# OVERVIEW OF ASSETS



**20 x Recreational Spaces**  
9 x Sports Related  
1 x Playground



**6 x Schools**  
Primary  
& Secondary



**9 x Healthcare Centres**  
including Hospitals



**100 + Local Businesses**  
significantly higher  
percentage of  
independently-owned  
than other towns



**3 x Hotels**



**Strong  
Transportation**  
very good  
connectivity  
via bus, train &  
inter-city

# WHAT PEOPLE LOVE ABOUT BALLINASLOE

👍 39 Great central base

👍 36 The community feeling & having family an...

👍 31 Easy Access To Motorway

👍 25 huge potential with motorway, rails link...

👍 23 The people

👍 19 the sense of positive community spirit

👍 18 Great community

👍 15 The People, its history, community and t...

👍 13 Right now, not much

👍 12 Rich history as a hospitable town, and a...

👍 11 Location

👍 8 Its central location and its people

👍 8 While being a small town, it is in the "...

👍 8 Community Spirit

👍 7 Its the town i grew up in. I feel it has...

👍 7 Community spirit, Great place to rear a ...

👍 6 Great access

👍 6 It is central.

👍 6 Some very good businesses despite town s...

👍 5 Rail and Bus links to Dublin.

# PLACE





PLACEMAKING  
IS  
PROCESS



TOUR BUSES  
PLEASE  
TURN OFF MOTOR  
WHILE WAITING

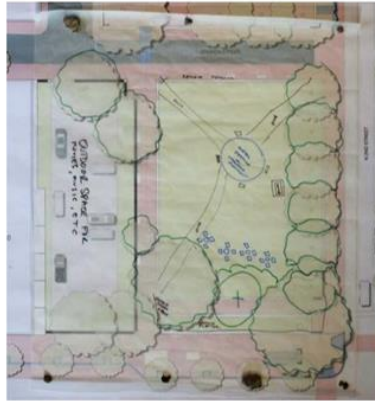
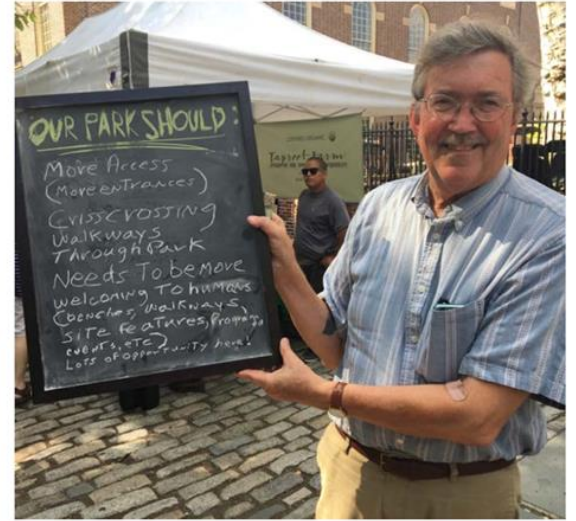
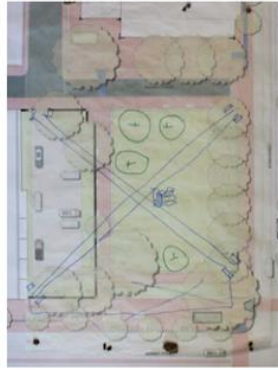
ONE WAY

NO STOPPING  
ANY TIME

NO STOPPING  
ANY TIME

PHARMACY

# Open Design Workshop: Christ Church Farmers Market, 18 August, 2018







Phase 1



Phase 4

# PROCESS

## Short Term

What do you have?	What do you need?	Who else needs to be involved?

## Medium-Term

What do you have?	What do you need?	Who else needs to be involved?

## Long Term

What do you have?	What do you need?	Who else needs to be involved?



## Short Term

What do you have?	What do you need?	Who else needs to be involved?

## Medium Term

What do you have?	What do you need?	Who else needs to be involved?



I  
THANK YOU