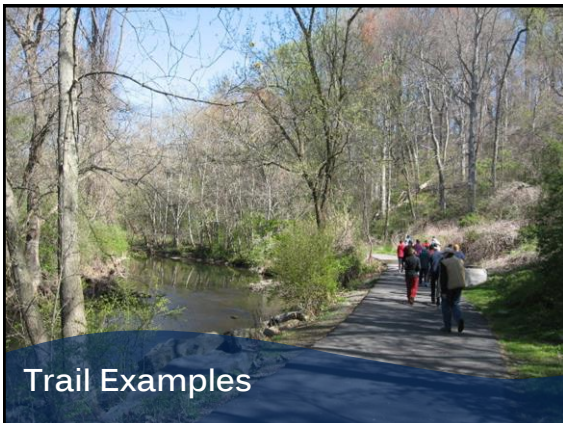




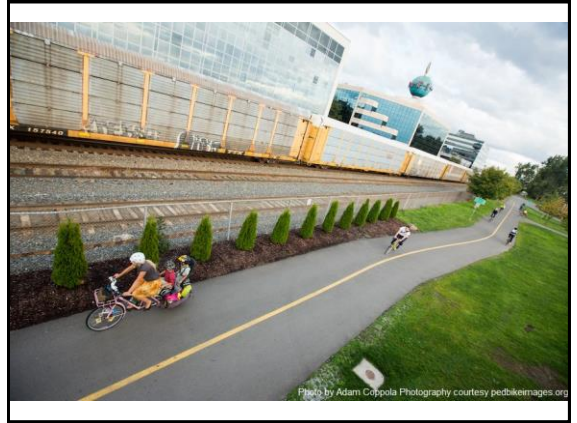
### Meeting Agenda

1. Welcome and Introductions (7:00)
2. Review of Agenda & Ground Rules (7:02)
3. Presentation (7:05)
  - a. Trail Examples
  - b. County Trail Planning
  - c. Project Scope
  - d. Existing Plans & Conditions
  - e. Study Area Findings and Trail Route Alternatives
4. Small Group Discussion (7:45)
5. Next Steps (8:20)



## Off-Road and Park Multi-Use Trails







# Sidepaths & Cycle Tracks



"Cycle Track" – Separated path along roadway that is distinct from the sidewalk. Might be entirely within legal street right-of-way.



Cycle Track



"Sidepath" – Parallel to roadway; might not be legally in street right-of-way. May replace the sidewalk.



Sidepath

# On-Road Trails / Bike Lanes





# Signage for Bike Trails





Share-the-Road  
&  
Street Crossings



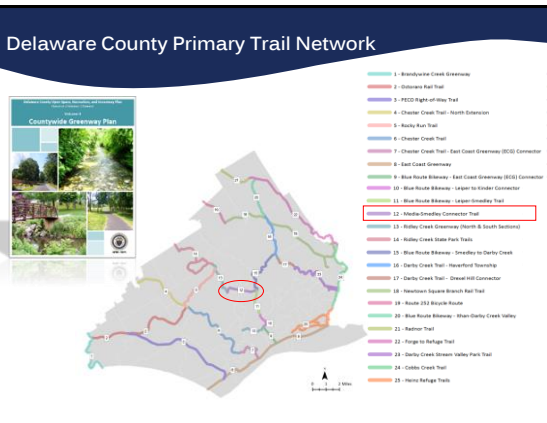


Advisory Bike Lanes



Pop-up / Temporary Streetscape Examples

# County Trail Planning



### "Primary Trail"

**Primary Trails in Delaware County Network**

- "Serve as the main spokes in the countywide network of trails."
- "Can be considered "planning corridors" for more detailed trail studies in the future." (Plan shows potential segments, but not specific alignments.)
- "Intended to be Type I and Type II (hardsurface) off-road connector trails owned or managed at the County, municipal, or multi-municipal level."
- If an entirely off-road trail is not feasible, some sections may be sited on sidewalks, roadsides, and/or roadway
- Should meet ADA standards, where feasible



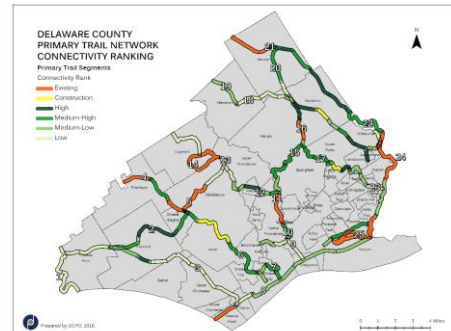
## “Primary Trail Network”



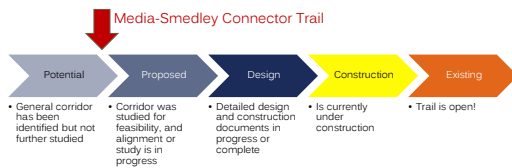
### Benefits of the Primary Trail Network:

- When completed, the trails will form a network of non-motorized travel and recreation connections near and between all corners of Delaware County, as well as to existing and proposed trails in adjacent counties.
- Increased access to open space and recreation → increases value of housing and tax revenues
- Network will draw trail users into existing downtown commercial districts → increased recreation-based commerce
- More safe bicycle routes = less automobile traffic.

## Connectivity



## Trail Status



## Project Scope

## Project Goals

1. Identify alternative alignments for the trail;
2. Identify property ownership along the proposed route and assess the steps necessary to establish public rights-of-way;
3. Identify technical constraints to construction;
4. Identify potential connections and adjacent destinations;
5. Describe public benefits of the trail,
6. Establish design standards for the trail;
7. Recommend an implementation strategy.

## Scope of Work

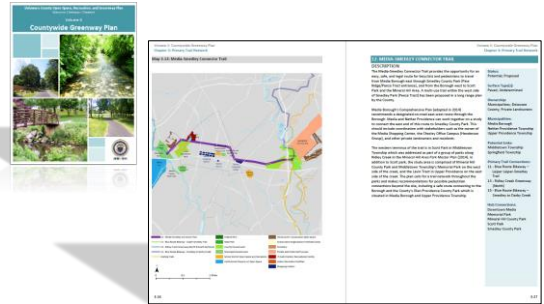
- Will fulfill PA DCNR trail feasibility study guidelines, including:
  - Study Area Background
  - Project Goals
  - Trail Benefits & Challenges
  - Trail Route Alternatives
  - Design Recommendations
  - Management and Maintenance
  - Implementation Strategy
  - Trail Development Cost Estimates

## Feasibility Study Project Funding

- Total Project Cost - \$70,000
  - \$35,000 PA Department of Conservation and Natural Resources grant
  - Matched with \$35,000
    - County in-kind
    - County cash
  - Developed primarily by County Planning staff.
  - Consultant to be hired at an amount not to exceed \$25,000 to assist in technical aspects of the plan.



## Media-Smedley Connector Trail



## Project Tasks

- Fieldwork (ongoing)
- Study Committee Meetings
- Consultant RFP/Selection/Contracting
- Public Meetings (2-3)
- Public Engagement (website)
- Key Person Interviews/Focus Groups
- Development of the Report
- County Adoption (target: end of 2020)

## Public Participation

- Study Committee (4-6 meetings)
  - County Planning Staff (Environmental and Transportation)
  - County Parks Department
  - County Conservation District
  - County Public Works
  - Municipalities (Media, Nether Prov., Upper Prov., Middletown, Springfield)
  - Media Business Authority
  - Bike Delaware County (BCGP)
  - CRC Watersheds Association
  - DCTMA
  - Friends of Smedley Park
  - SEPTA

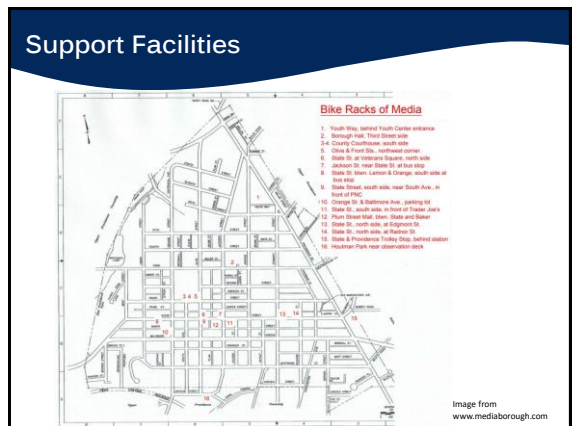
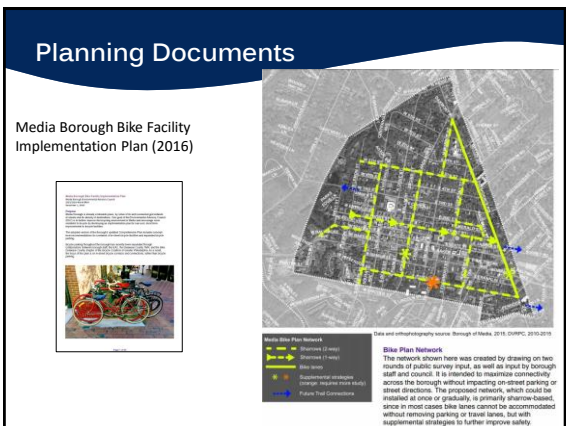
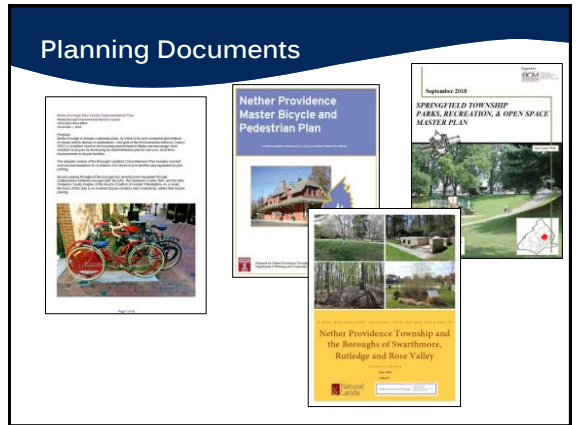
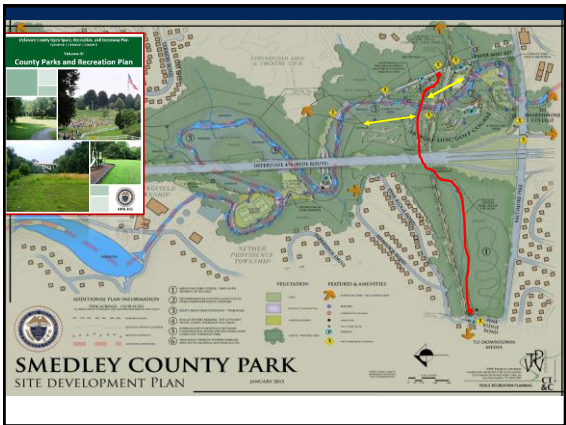
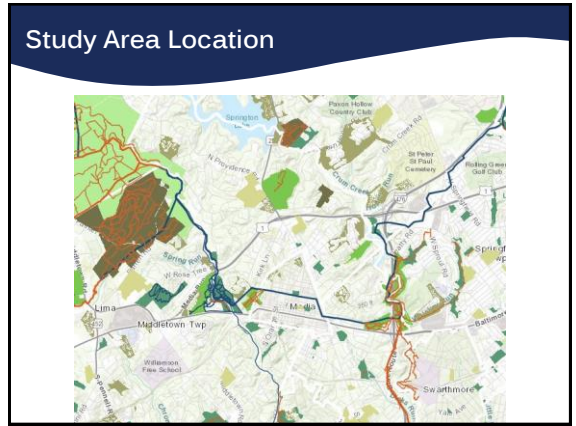
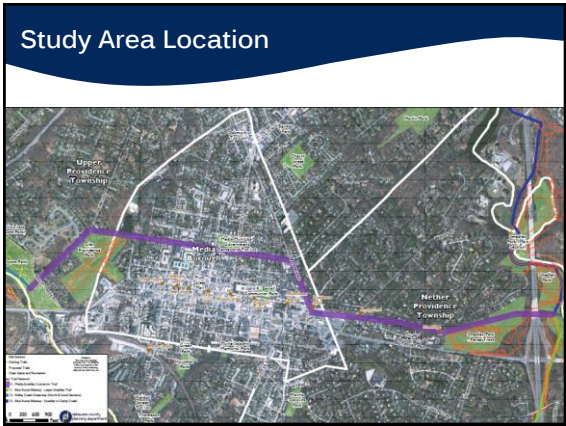
## Final Product

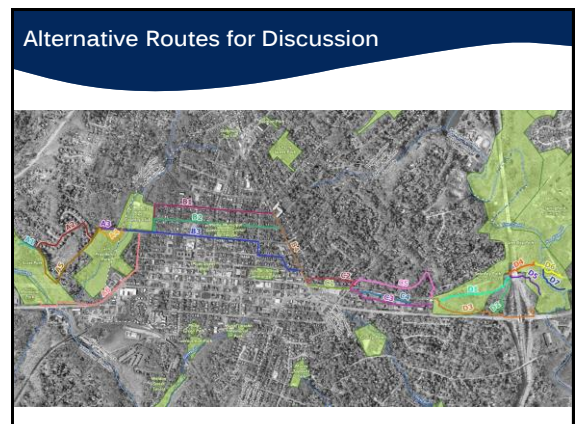
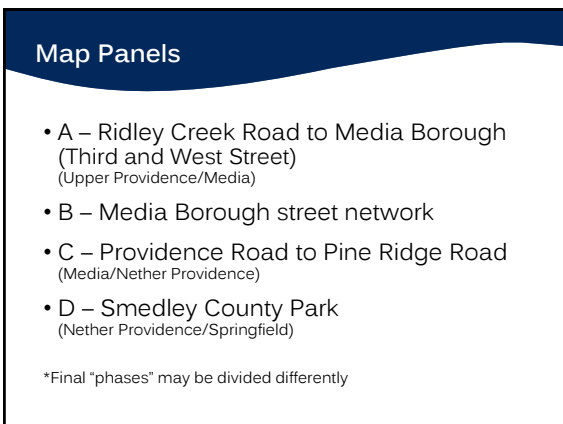
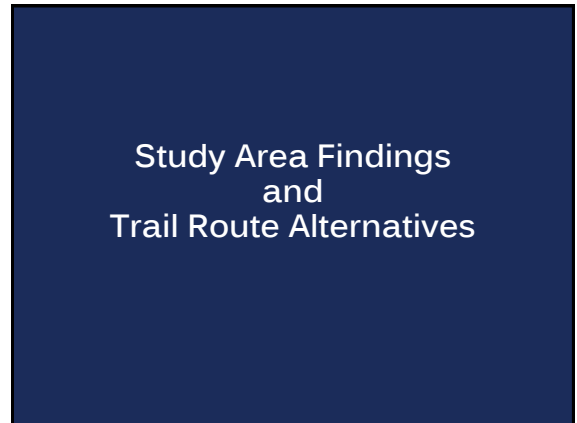
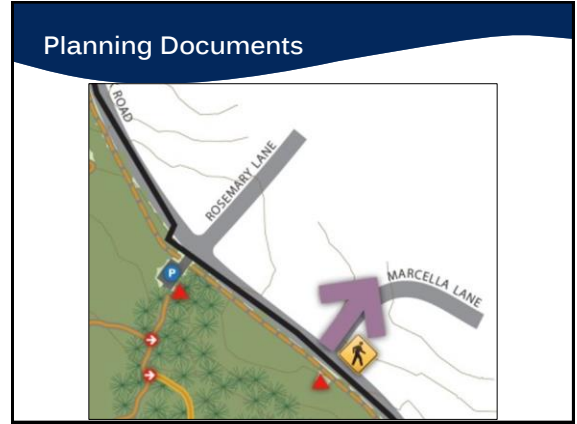
### A Trail Feasibility Study

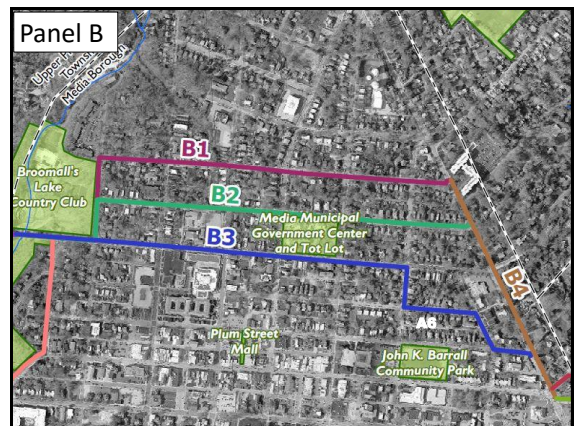
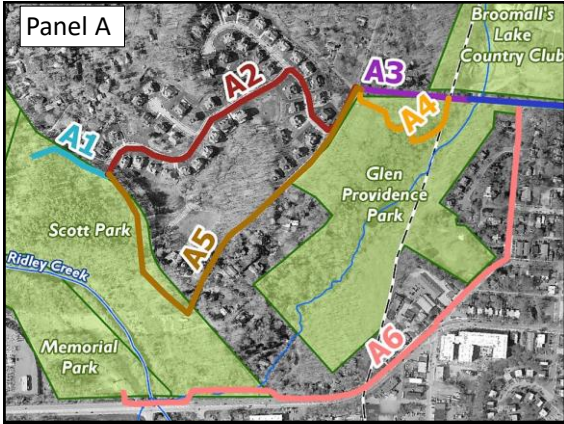
Written Report including:

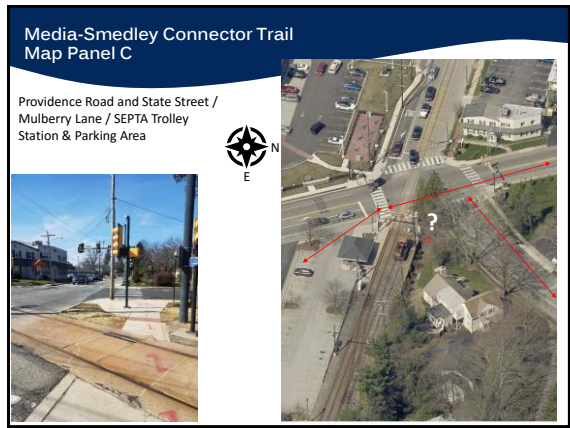
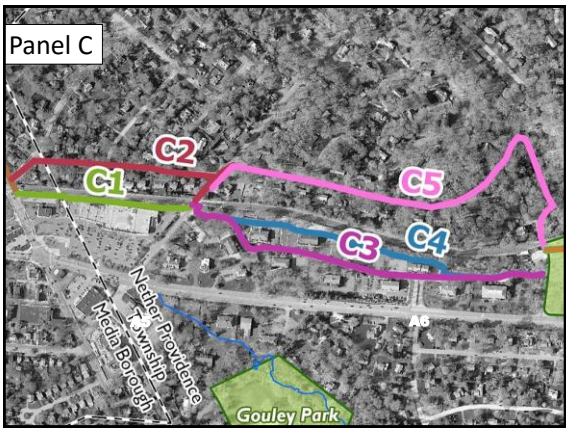
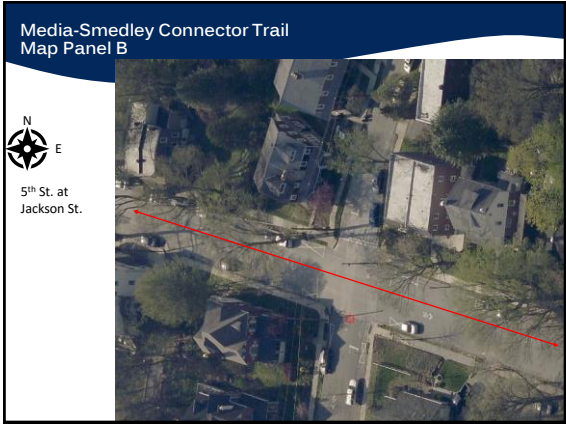
- Chapters detailing "Background" and "Benefits"
- Actions for securing right-of-way where the route is not already in public realm.
- Trail design recommendations (by phase/section).
- Cost Estimates and funding source recommendations for trail design and development in the various trail sections.
- Ideal lead and supporting agencies for recommended actions.
- Management and maintenance recommendations.
- Recommendations for continued public involvement.

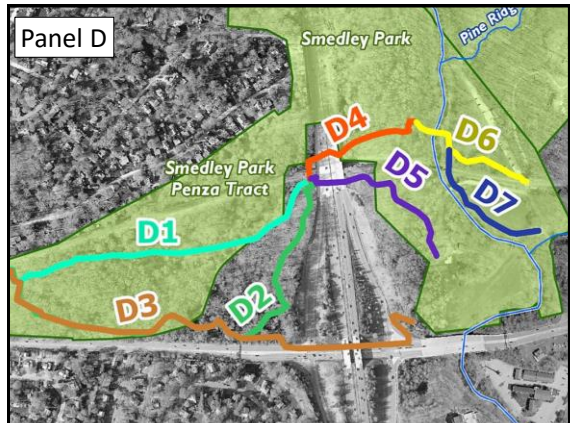
## Existing Plans & Conditions











### Media-Smedley Connector Trail Map Panel D



Smedley County Park – Near  
Trolley Tracks



Smedley County Park – East of Blue Route, North of Trolley  
Tracks, looking West



Smedley County Park –Walkway in Culvert Under SEPTA  
Trolley Tracks

### Media-Smedley Connector Trail Map Panel D

Smedley County  
Park



## Small Group Discussion

### Group Discussion Questions:

- A. If this trail existed now,
  - How do you envision using it?
  - And for what purposes?
- B. Do you have a preferred route(s)?
  - Which one among the alternatives shown?
  - Or do you have other ideas of your own that are not shown?
  - Why that route?
- C. What challenges and issues do you know about?  
[Note the section ID – if site-specific]
- D. What type of trail or bikeway...
  - ...designs would you like to see?
  - ...support elements would you like to see [types of signage, bike racks, etc.]?
- E. Also –Who should we talk to separately in an Interview/Focus Group?  
Write names (and contact information, if known) on Index Cards, and hand to a facilitator.



## Next Steps

- Update Project Website
- Continue Collecting Public Comment
- Continue Study Area Analysis
- Selection of Technical Assistance Consultant
- Schedule Interviews/Focus Groups
- Continue Writing Draft Report
- Study Committee Meeting #2



<https://www.delcopa.gov/planning/currentprojects/Media5medleyConnectorTrail.html>

