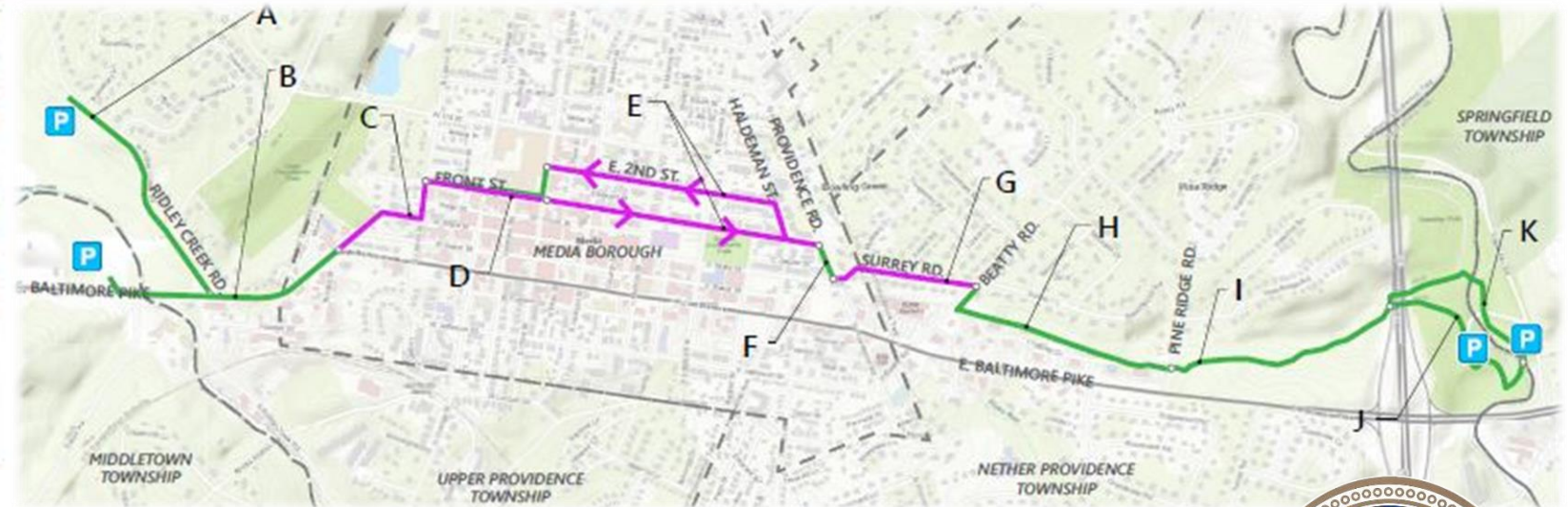
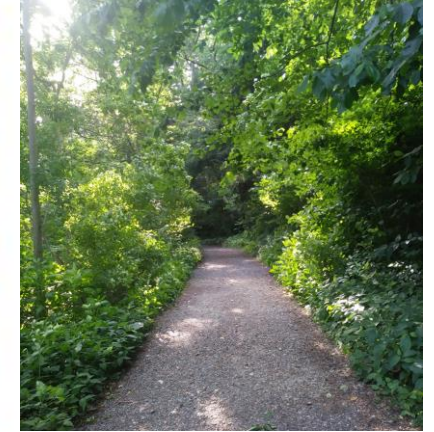


Project page at the Delaware County Planning Department Website – where presentation can be downloaded:
<https://www.delcopa.gov/planning/currentprojects/MediaSmedleyConnectorTrail.html>



Media-Smedley Connector Trail Feasibility Study

November 10, 2020
Final Public Meeting



Introductions

Delaware County Planning Department

- Steven Beckley, AICP, Open Space and Trails Manager (Host & Main Presenter)
- Corey Brown, Senior Transportation Planner (Q&A Moderator)



Traffic Planning and Design, Inc. – Project Consultant

- Randy Waltermyer, AICP (available for questions)



Project page at the Delaware County Planning Department Website – where presentation can be downloaded:

<https://www.delcopa.gov/planning/currentprojects/MediaSmedleyConnectorTrail.html>

Meeting Agenda

1. Welcome and Introductions (6:00)
2. Review of Agenda & Ground Rules (6:02)
3. Presentation
 - a. Background (6:05)
 - b. Feasibility Study Process (6:12)
 - c. Draft Report Elements (6:20)
 - d. Steps for Implementation (6:40)
4. Remaining Steps for the Study (6:57)
5. Comment & Question Period (7:00)
6. Adjournment (7:30)

Project page at the Delaware County Planning Department Website – where presentation can be downloaded:

<https://www.delcopa.gov/planning/currentprojects/MediaSmedleyConnectorTrail.html>

Ground Rules:

A. Submit Typed Questions and Comments

- Type and submit questions and comments in the “Q & A” chat area.
- With your question/comment, type your name and affiliation (stakeholder group) or township/borough/street of residence.
- You may submit questions relevant to the specific slides at that part of the presentation, or hold them or general questions/comments to the end.

B. Response

- A member of the project team will voice each of the questions and comments. The project staff will respond.
- If your question seems like it has been skipped, it is probably being held until later to keep the meeting moving and on topic.
- All comments are recorded even if not responded to formally during the meeting.

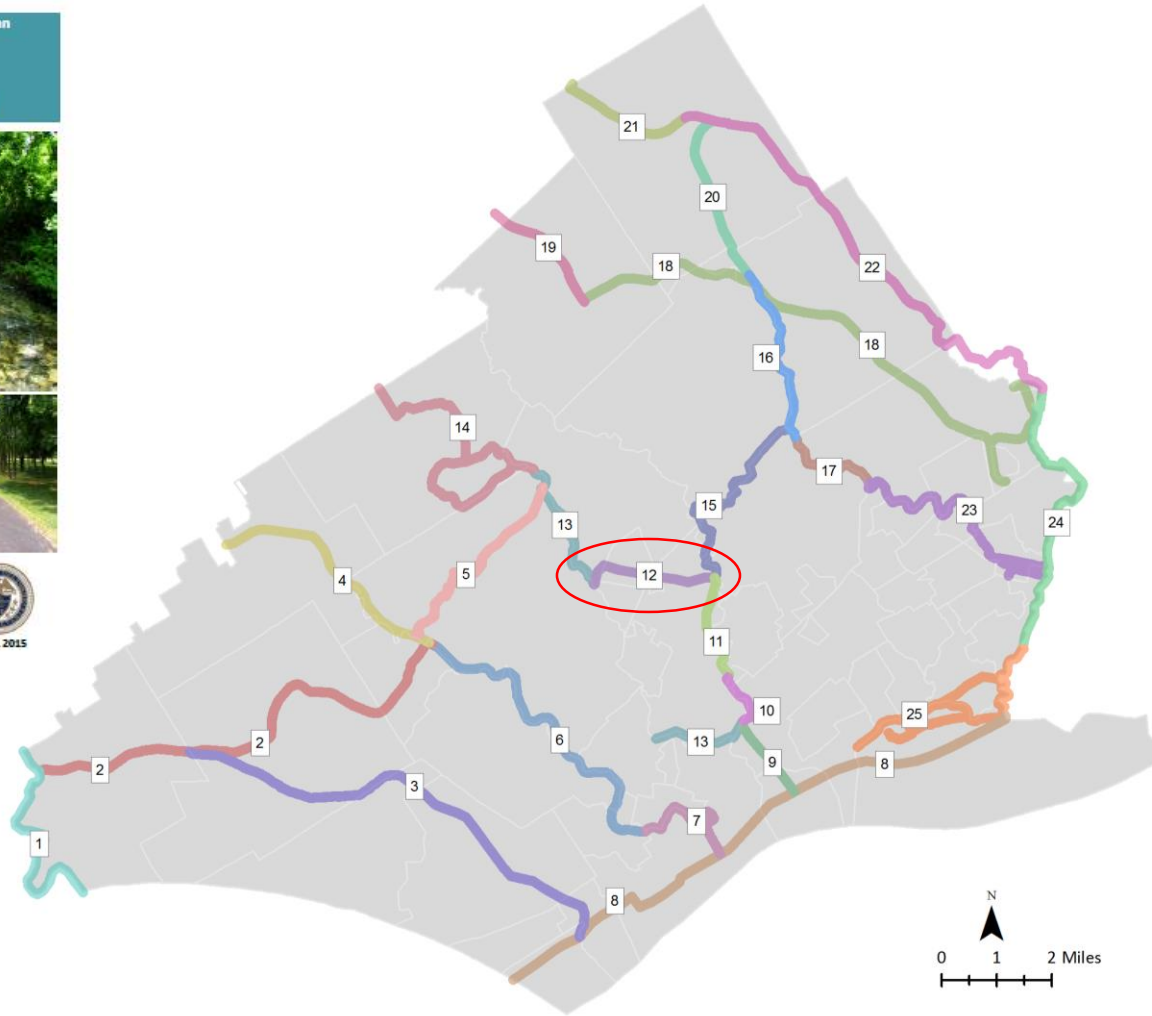
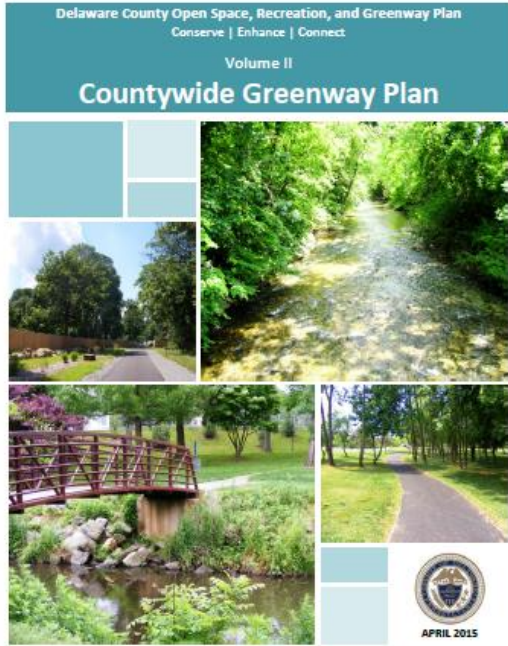
C. The meeting will end at 7:30.

Project page at the Delaware County Planning Department Website – where presentation can be downloaded:

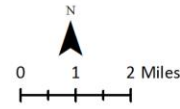
<https://www.delcopa.gov/planning/currentprojects/MediaSmedleyConnectorTrail.html>

Background

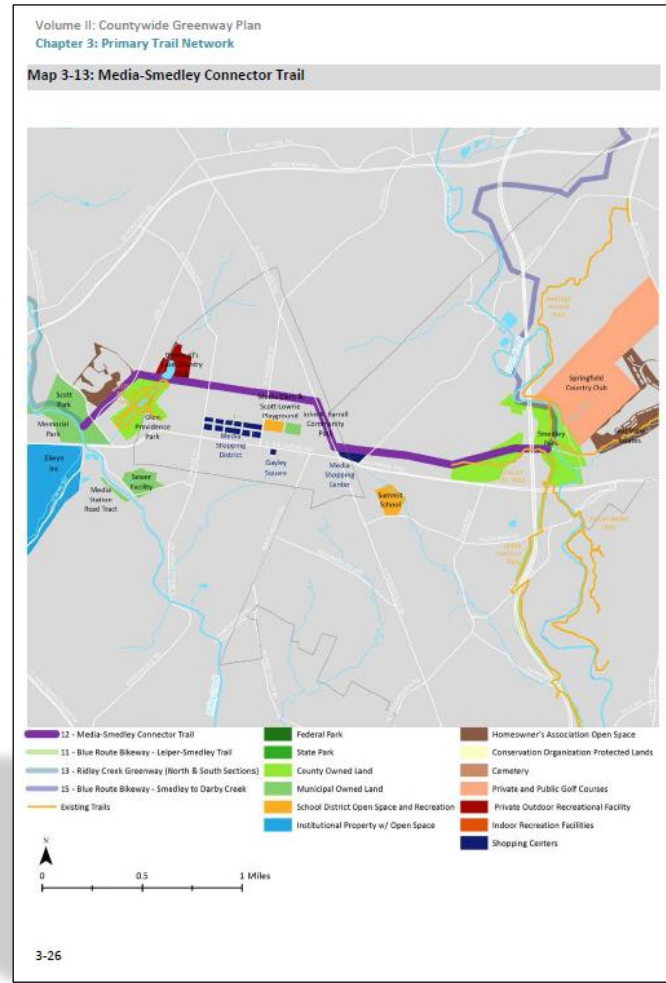
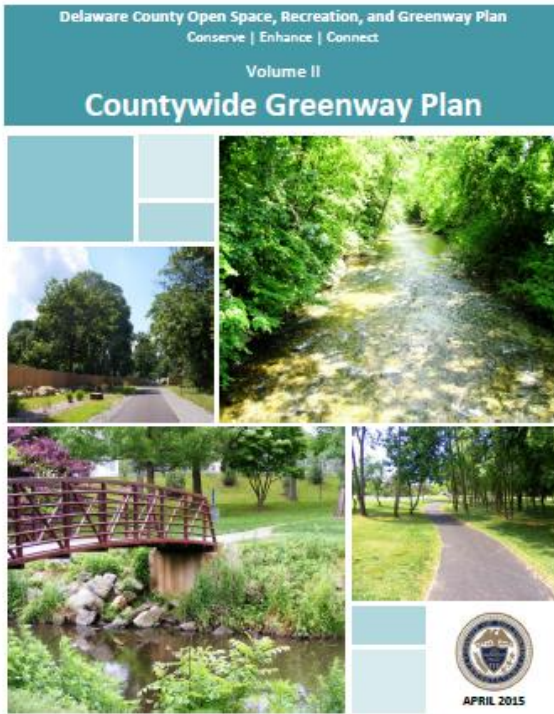
Delaware County Primary Trail Network



- 1 - Brandywine Creek Greenway
- 2 - Octoraro Rail Trail
- 3 - PECO Right-of-Way Trail
- 4 - Chester Creek Trail - North Extension
- 5 - Rocky Run Trail
- 6 - Chester Creek Trail
- 7 - Chester Creek Trail - East Coast Greenway (ECG) Connector
- 8 - East Coast Greenway
- 9 - Blue Route Bikeway - East Coast Greenway (ECG) Connector
- 10 - Blue Route Bikeway - Leiper to Kinder Connector
- 11 - Blue Route Bikeway - Leiper-Smedley Trail
- 12 - Media-Smedley Connector Trail
- 13 - Ridley Creek Greenway (North & South Sections)
- 14 - Ridley Creek State Park Trails
- 15 - Blue Route Bikeway - Smedley to Darby Creek
- 16 - Darby Creek Trail - Haverford Township
- 17 - Darby Creek Trail - Drexel Hill Connector
- 18 - Newtown Square Branch Rail Trail
- 19 - Route 252 Bicycle Route
- 20 - Blue Route Bikeway - Ithan-Darby Creek Valley
- 21 - Radnor Trail
- 22 - Forge to Refuge Trail
- 23 - Darby Creek Stream Valley Park Trail
- 24 - Cobbs Creek Trail
- 25 - Heinz Refuge Trails



Media-Smedley Connector Trail



12: MEDIA-SMEDLEY CONNECTOR TRAIL

DESCRIPTION

The Media-Smedley Connector Trail provides the opportunity for an easy, safe, and legal route for bicyclists and pedestrians to travel from Media Borough east through Smedley County Park (Pine Ridge/Penza Tract entrance), and from the Borough west to Scott Park and the Mineral Hill Area. A multi-use trail within the west side of Smedley Park (Penza Tract) has been proposed in a long range plan by the County.

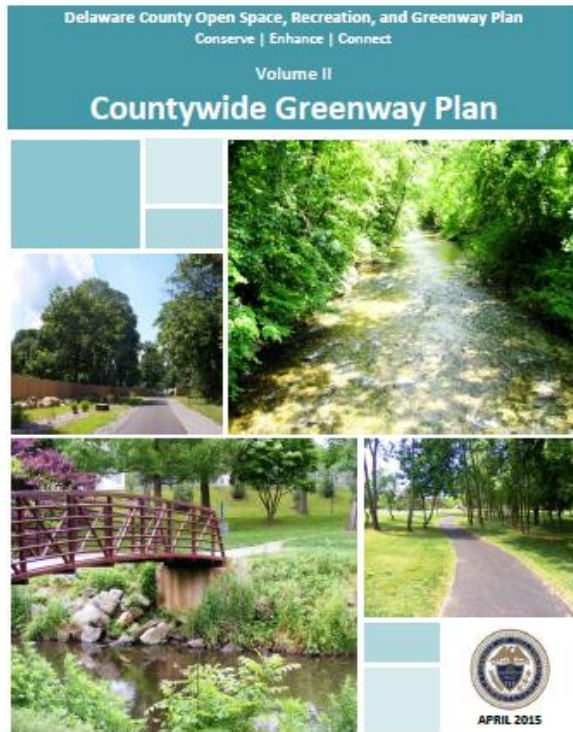
Media Borough's Comprehensive Plan (adopted in 2014) recommends a designated on-road east-west route through the Borough. Media and Nether Providence can work together on a study to connect the east end of this route to Smedley County Park. This should include coordination with stakeholders such as the owner of the Media Shopping Center, the Chesley Office Campus (Henderson Group), and other private landowners and residents.

The western terminus of the trail is in Scott Park in Middletown Township which was addressed as part of a group of parks along Ridley Creek in the *Mineral Hill Area Park Master Plan* (2014). In addition to Scott park, the study area is comprised of Mineral Hill County Park and Middletown Township's Memorial Park on the west side of the creek, and the Lavin Tract in Upper Providence on the east side of the creek. The plan calls for a trail network throughout the parks and makes recommendations for possible pedestrian connections beyond the site, including a safe route connecting to the Borough and the County's Glen Providence County Park which is situated in Media Borough and Upper Providence Township.

Volume II: Countywide Greenway Plan
Chapter 3: Primary Trail Network

- Status:
Potential; Proposed
- Surface Type(s):
Paved; Undetermined
- Ownership:
Municipalities; Delaware County; Private Landowners
- Municipalities:
Media Borough
Nether Providence Township
Upper Providence Township
- Potential Links:
Middletown Township
Springfield Township
- Primary Trail Connections:
11 - Blue Route Bikeway - Leiper-Smedley Trail
13 - Ridley Creek Greenway (North)
15 - Blue Route Bikeway - Smedley to Darby Creek
- Hub Connections:
Downtown Media
Memorial Park
Mineral Hill County Park
Scott Park
Smedley County Park

“Primary Trail”

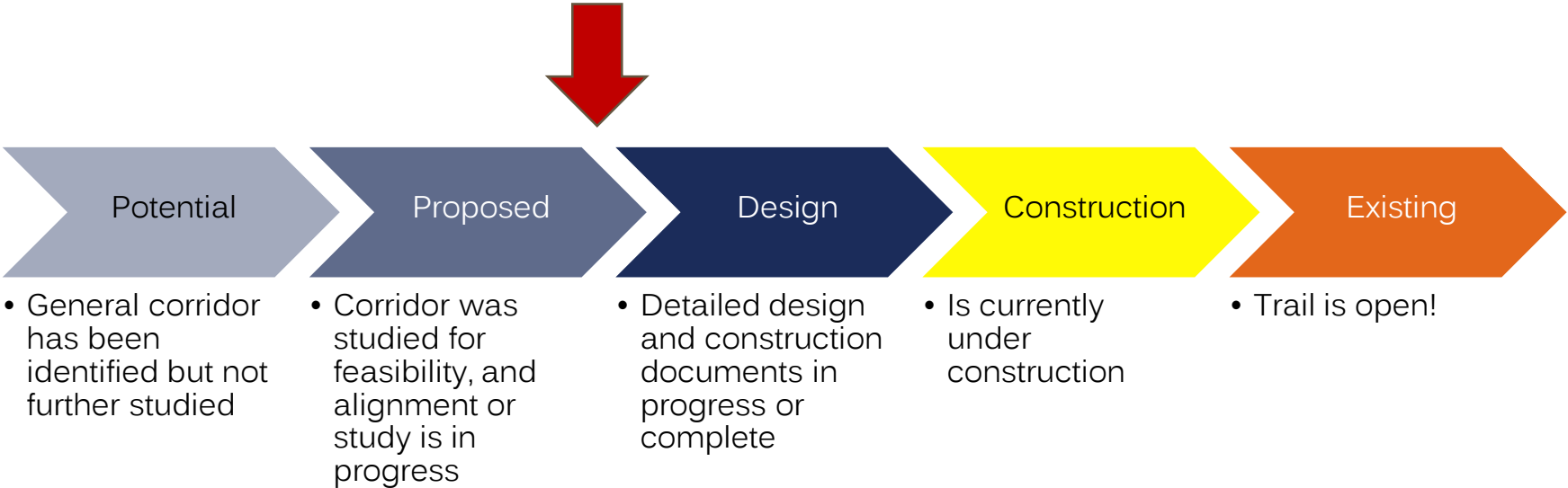


Primary Trails in Delaware County Network

- “Serve as the main spokes in the countywide network of trails.”
- “Can be considered **“planning corridors” for more detailed trail studies in the future.**” (Plan shows potential segments, but not specific alignments.)
- “Intended to be Type I and Type II (hardsurface) off-road connector trails owned or managed at the County, municipal, or multi-municipal level.”
- **If an entirely off-road trail is not feasible, some sections may be sited on sidewalks, roadsides, and/or roadway**
- Should meet ADA standards, where feasible

Trail Status

Media-Smedley Connector Trail



Feasibility Study Project Funding

- Total Project Cost - \$70,000
 - \$35,000 PA Department of Conservation and Natural Resources grant
 - Matched with \$35,000
 - County in-kind (staff time)
 - County cash (Open Space Fund)
 - Developed by County Planning staff
- Traffic Planning and Design, Inc. – consultant hired for \$25,000, assisted with trail design concepts, feasibility matrix, cost analysis, & other technical aspects



Goals of the Study

1. ID & weigh the alternative trail alignments to arrive at proposed route;
2. ID property ownership along the proposed route and whether additional public right-of-way will be needed/desired;
3. ID technical constraints & challenges;
4. ID potential connections, destinations;
5. Describe trail's public benefits;
6. Establish design standards;
7. Recommend an implementation strategy;
8. Provide cost estimates for implementation

Feasibility Study Process

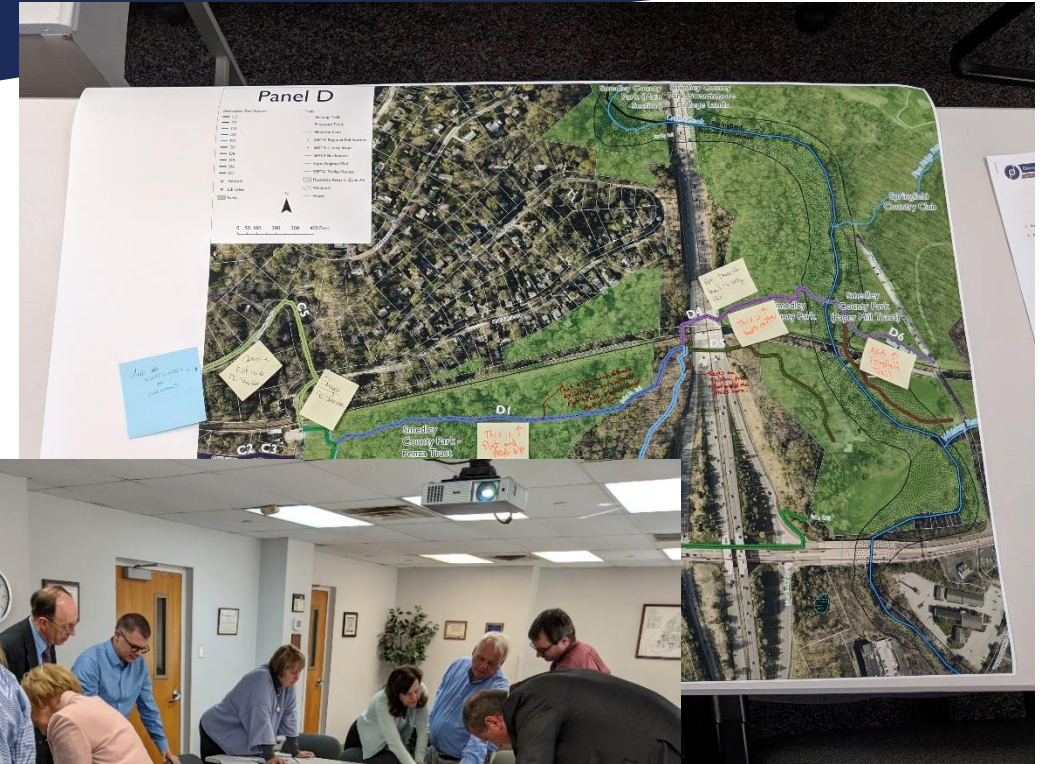
Project Tasks

- Fieldwork
- Study Committee Meetings (4)
- Public Meetings (3)
- Interviews/Focus Groups
- Feasibility Analysis, Conceptual Design & Report Development

Study Committee

Included Representatives from:

1. Media Borough
2. Middletown Township
3. Nether Providence Township
4. Springfield Township
5. Upper Providence Township
6. Delaware County Planning Department
7. Delaware County Parks Department
8. Delaware County Public Works Department
9. Delaware County Conservation District
10. Chester Ridley Crum Watersheds Association
11. Bike Delaware County/Bike Coalition of Greater Phila.
12. Delaware County Transportation Management Association
13. Media Business Authority
14. Friends of Smedley Park
15. Friends of Glen Providence Park
16. SEPTA



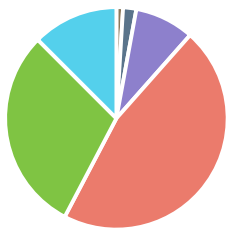
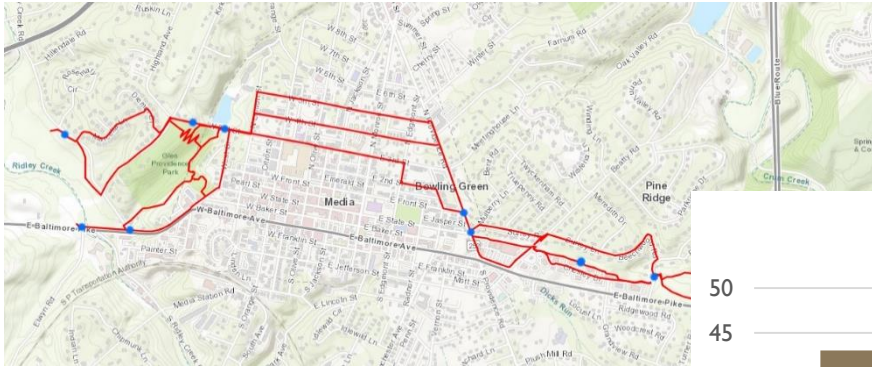
Interviews & Focus Groups

Including Representatives & Leaders from:

1. Media EAC
2. Friends of Glen Providence Park
3. Friends of Smedley Park
4. Media Borough Council (2)
5. Nether Providence Township (Manager)
6. Upper Providence Township (Manager)
7. Henderson Group (Chesley Office Campus Property Owners rep.)
8. Media Shopping Center-Echo Realty
11. Upper Providence for Open Space
10. Mineral Hill Area Friends/Reserve at Rose Tree Homeowners Assoc.
11. Woodlands at Ridley Creek HOA (President)
12. CRC Watersheds Association (Exec. Director)
13. SEPTA
14. PennDOT
15. Mountain Bikers using Smedley Park (2 focus groups)
16. Municipal Officials (focus group for 5 municipalities)

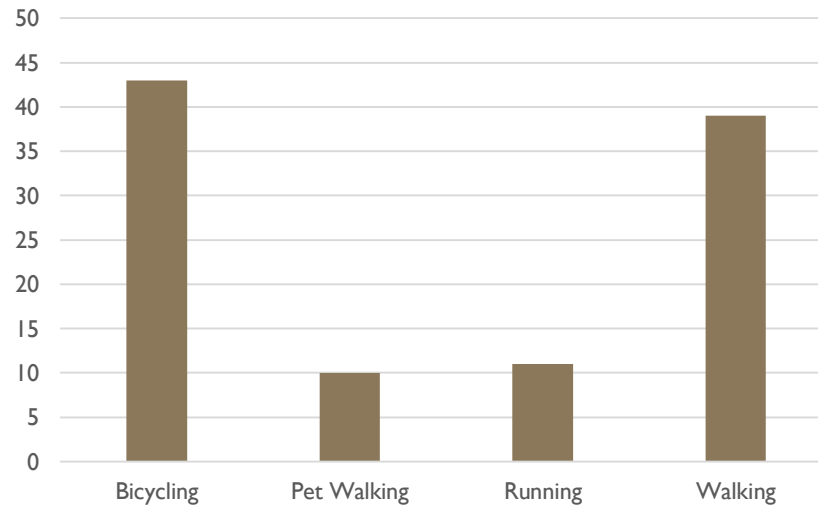
Public Survey

Online Survey Map – Feb. 26 to April 21, 2020.



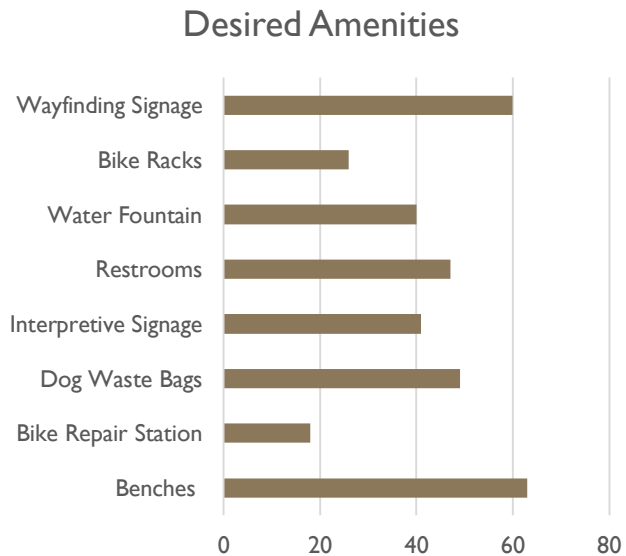
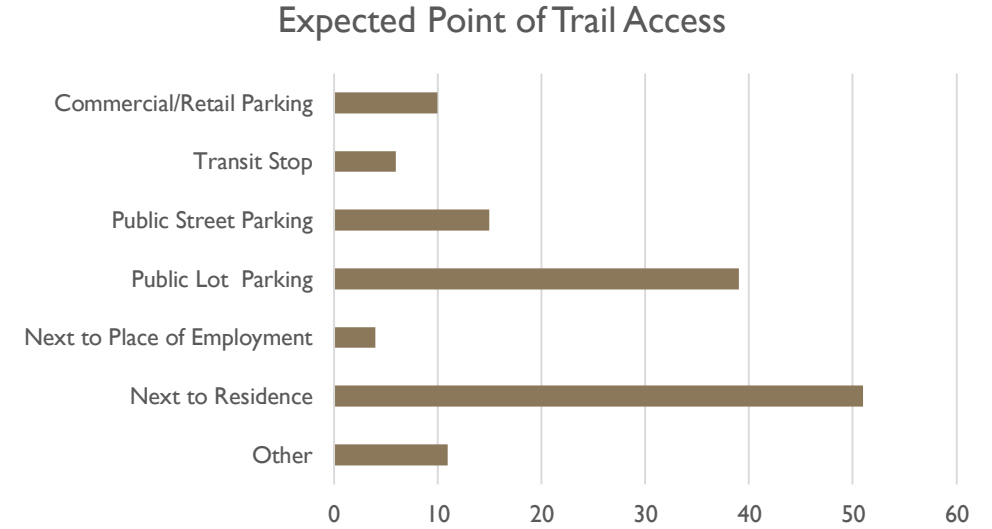
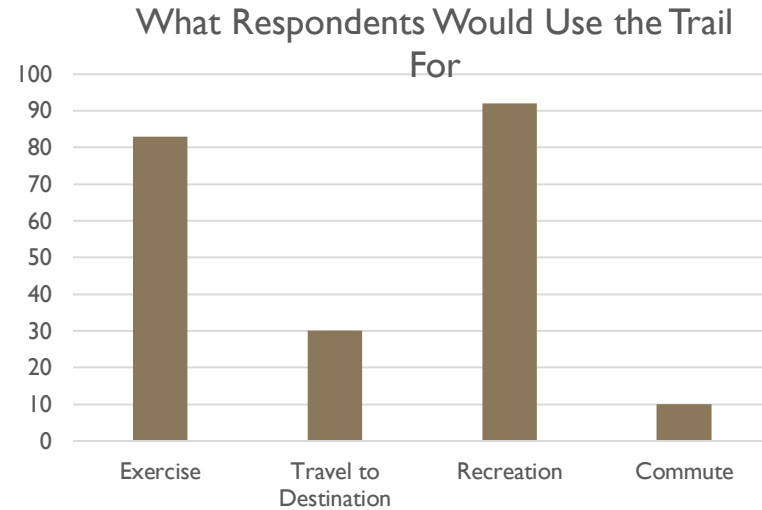
■ 11 to 17 ■ 18 to 24 ■ 25 to 34
■ 35 to 49 ■ 50 to 64 ■ 65 and over

Activities



- 104 responses.
- Respondents identified bicycling and walking the most as anticipated trail activities over running and pet-walking.
- Respondents plotted 16 points to comment on map of alternative routes. Many were either praising routes or concerns about safety, slopes and connections.

Public Survey



- Approximately 10% of respondents said they would use the trail to commute
- Wayfinding signage and benches were identified as the most wanted amenities

Public Meetings

- Public Meeting #1:

Presented the scope of work and benefits of the trail.
Obtained feedback on alternative alignments for the trail, potential user destinations, and trail usage.

- Public Meeting #2:

Presentation of the current draft trail alignment and potential design for each segment of the trail.

- Public Meeting #3 (*THIS MEETING*):

Summary of the Feasibility Study report and steps for implementation.

Draft Report Elements

Draft Feasibility Study Report



DRAFT

October 30, 2020

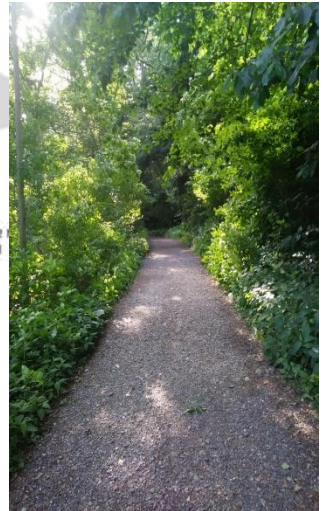
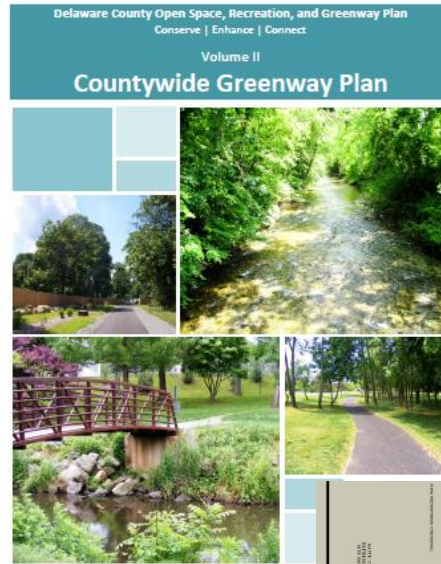
**MEDIA SMEDLEY CONNECTOR TRAIL
FEASIBILITY STUDY**

DELAWARE COUNTY PLANNING DEPARTMENT
TRAFFIC PLANNING AND DESIGN, INC.

Chapter 1 - Introduction

Overall Project Purpose & Goals

- Process of the study
- Benefits of trails
- Planning context



Chapter 2 – Community Profile

Description of the local community and its social and physical characteristics.

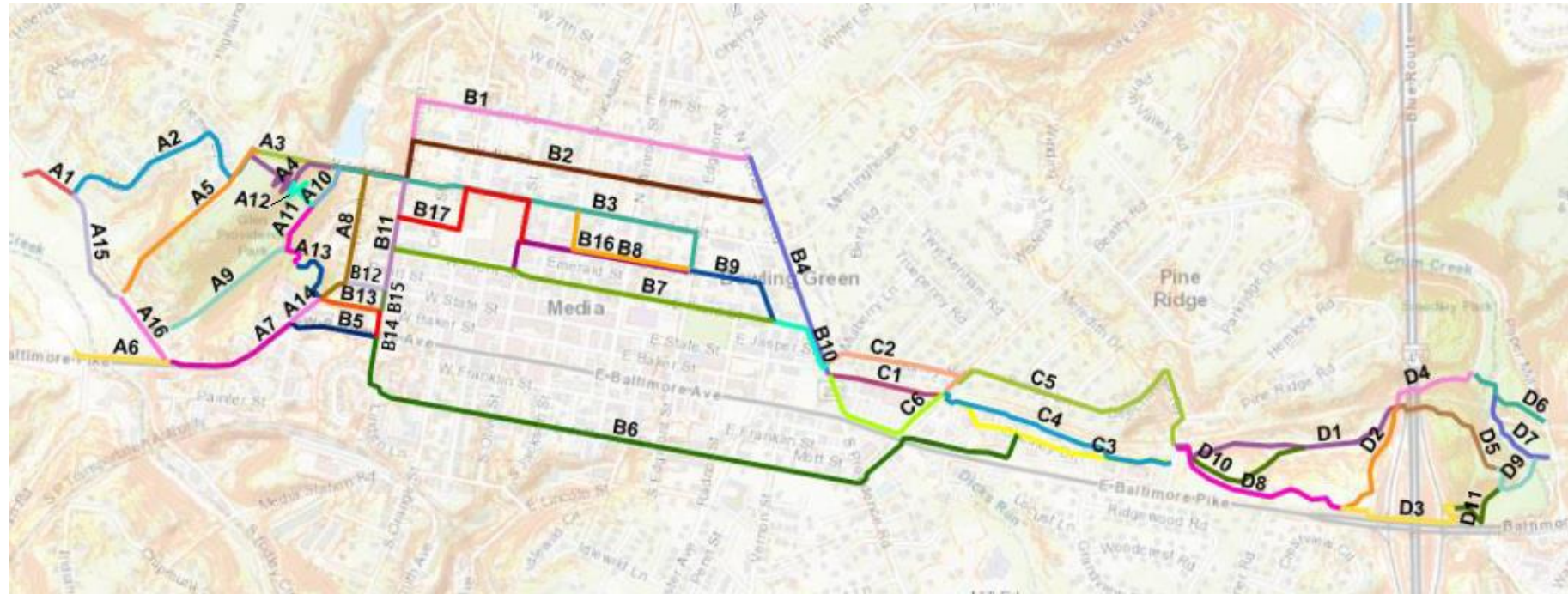
- Demographic statistics and trends
- Potential uses of the trail (commuting and recreation)
- Analysis of Public Participation response.



Chapter 3 – Feasibility Study

Physical inventory and assessment of the entire study area, including:

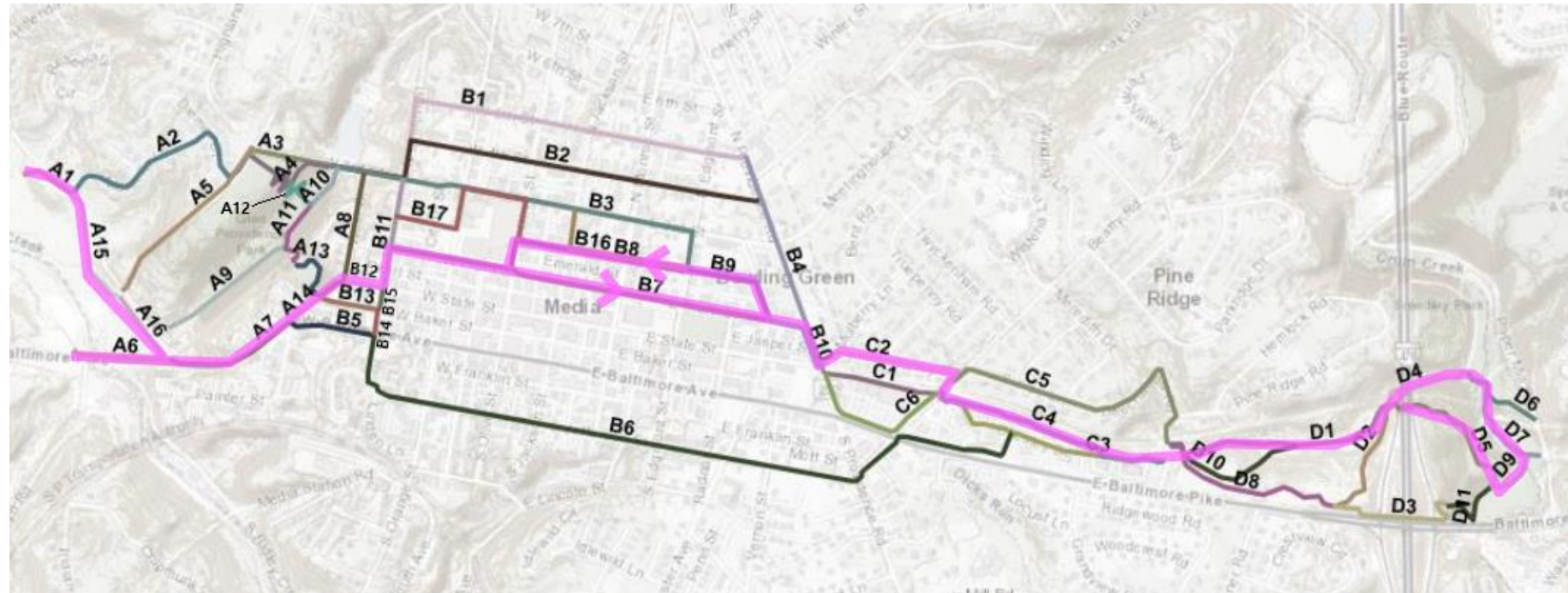
- Surrounding Land Uses & Features - maps & analysis
- Physical Conditions
- Opportunities & Constraints
- **Alternative Alignments Analysis**



Chapter 3 – Feasibility Study

Physical inventory and assessment of the entire study area, including:

Weighed pros and cons of every possible trail route, justifying proposed alignment



Chapter 4 – Trail Master Plan

A detailed description of the recommended trail alignment by segment and overview of recommended design elements.

Factors that Determined Recommended Alignment

- Facility Type (Off-Road preferred over On-Road)
- Environmental Impact (lower impacts preferred)
- ADA Accessibility (avoiding steep slopes, if possible)
- Engineering Feasibility (complexity to design/build)
- Legal Feasibility (impact on private property)
- Cost (relative to other segments)



Chapter 4 – Trail Master Plan

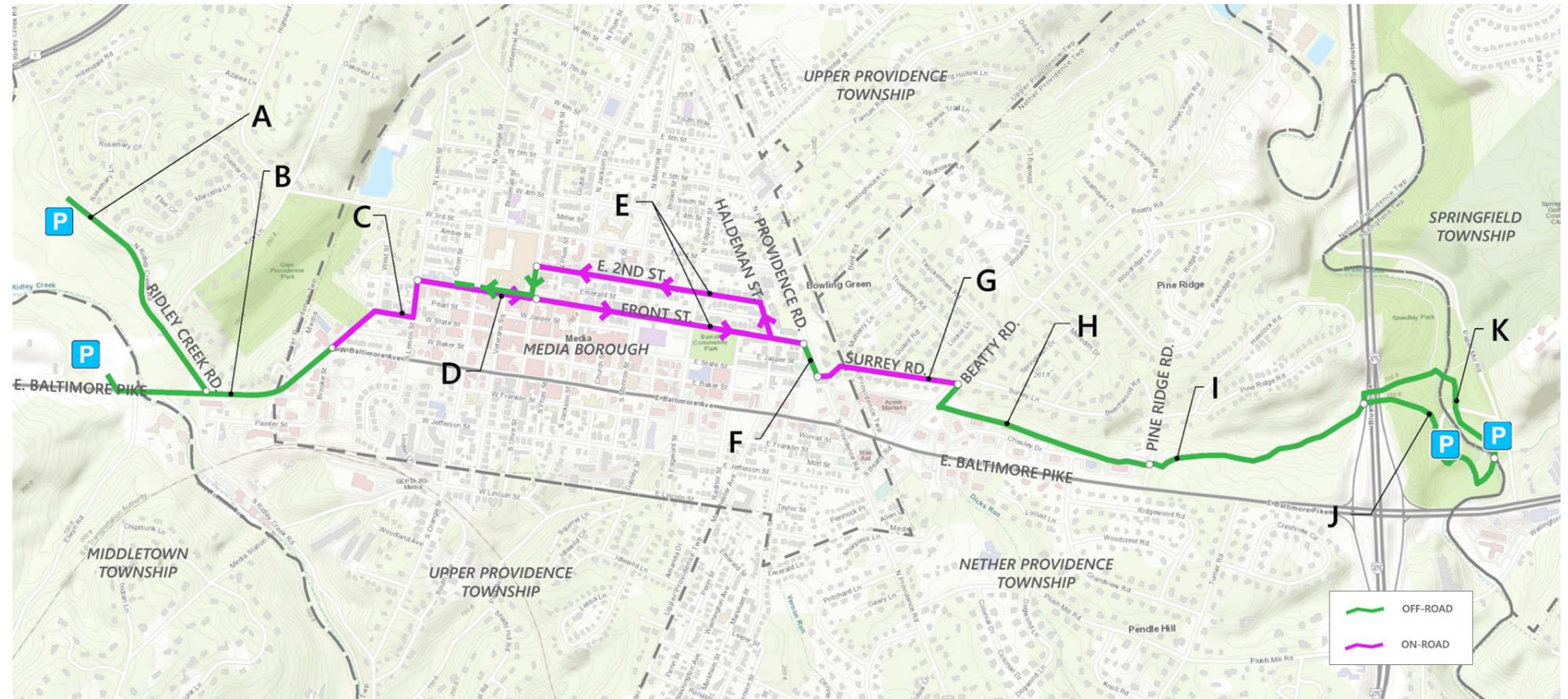
A detailed description of the recommended trail alignment by segment and overview of recommended design elements.

11 segments (A-K)

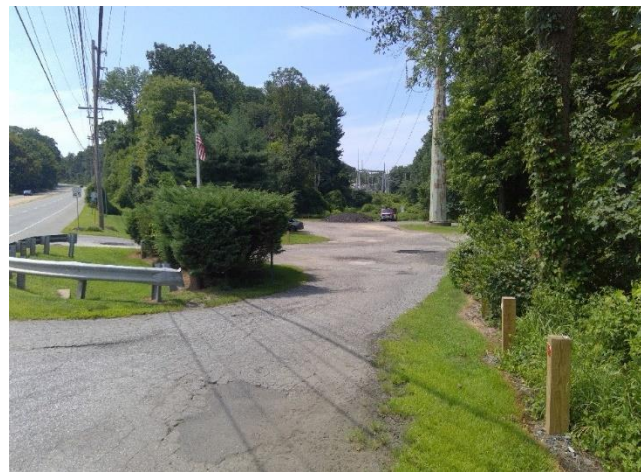
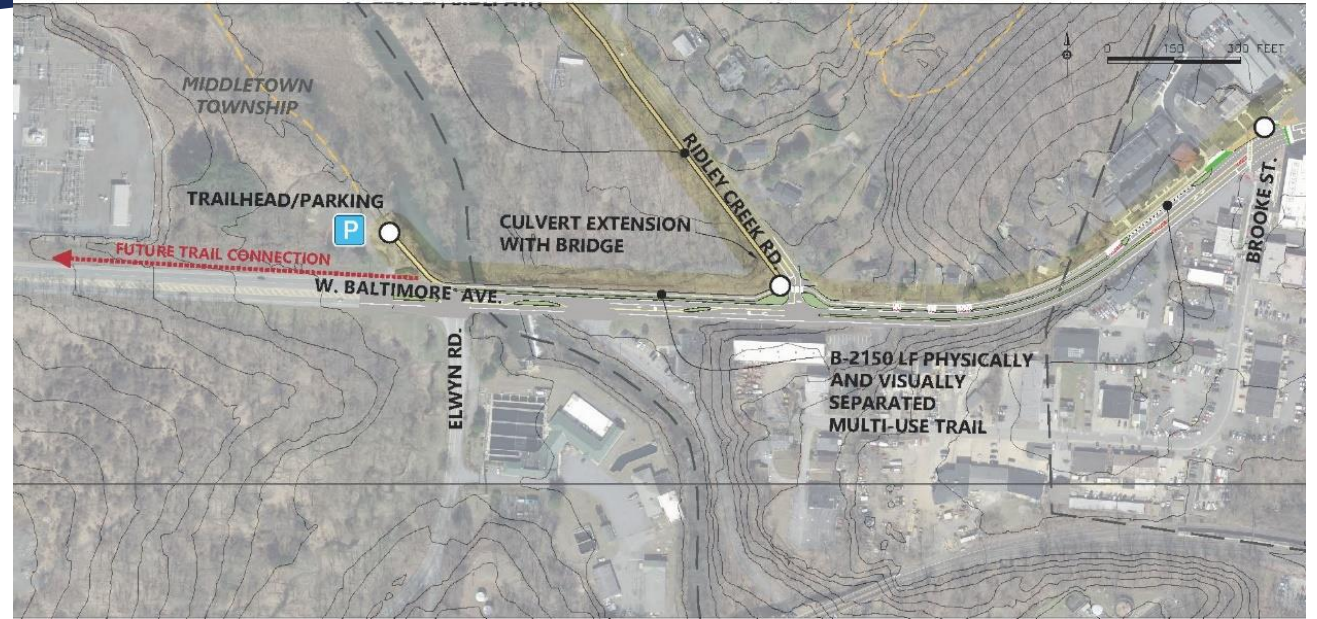
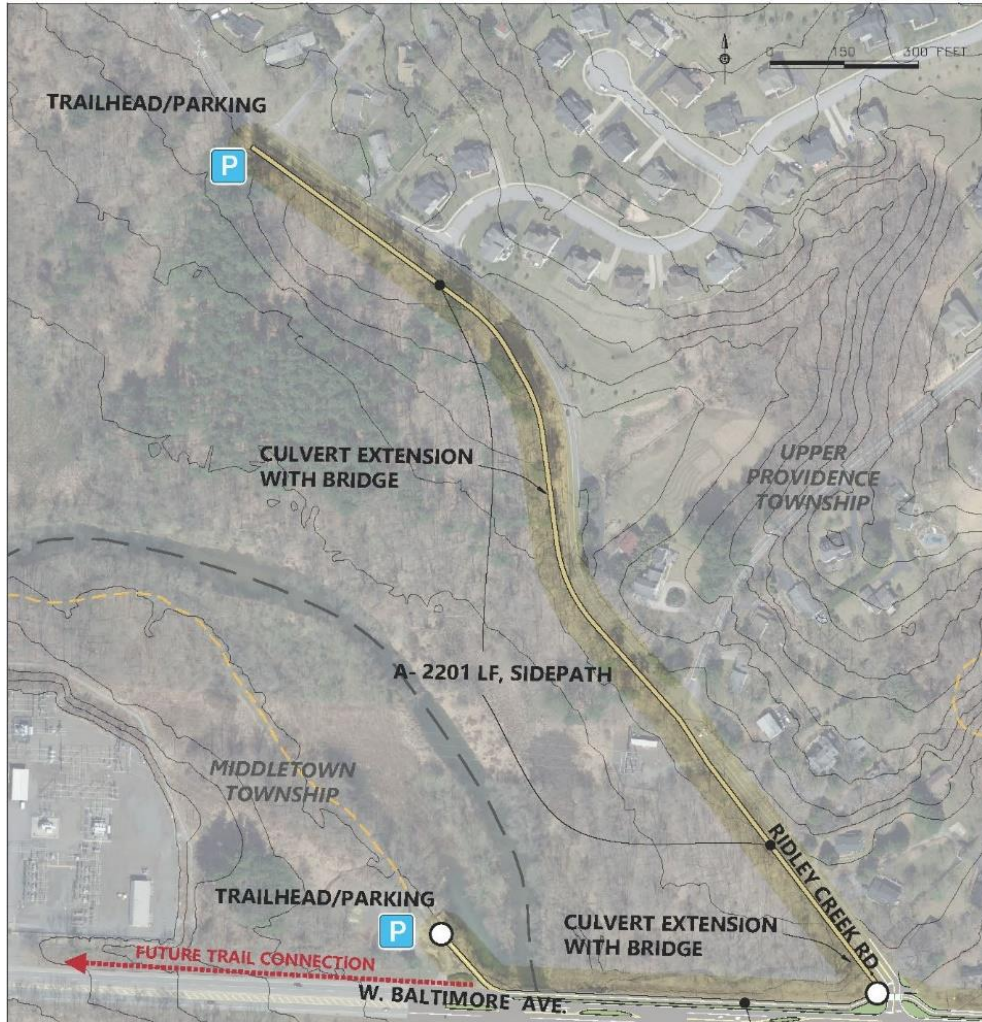
Concept graphics and descriptions

All Segments:
4.2 miles (or 22,174 feet).

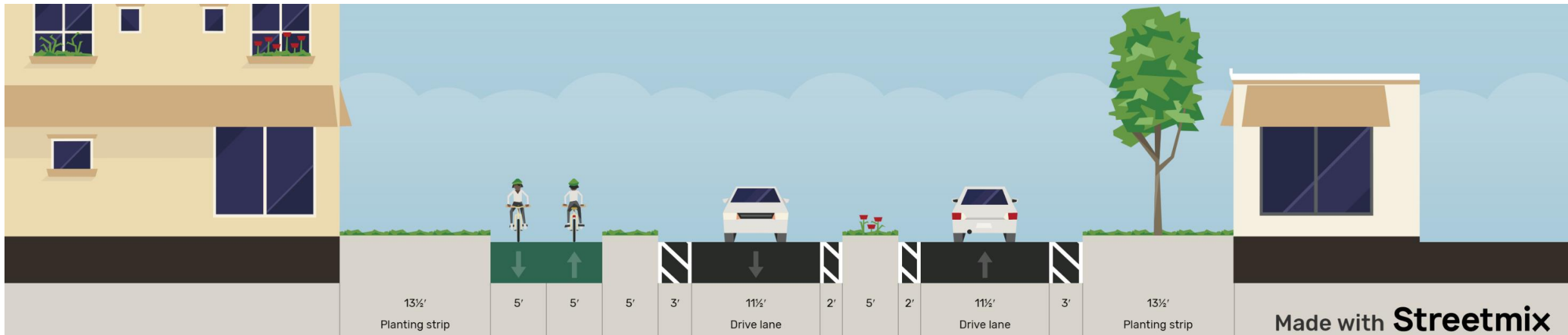
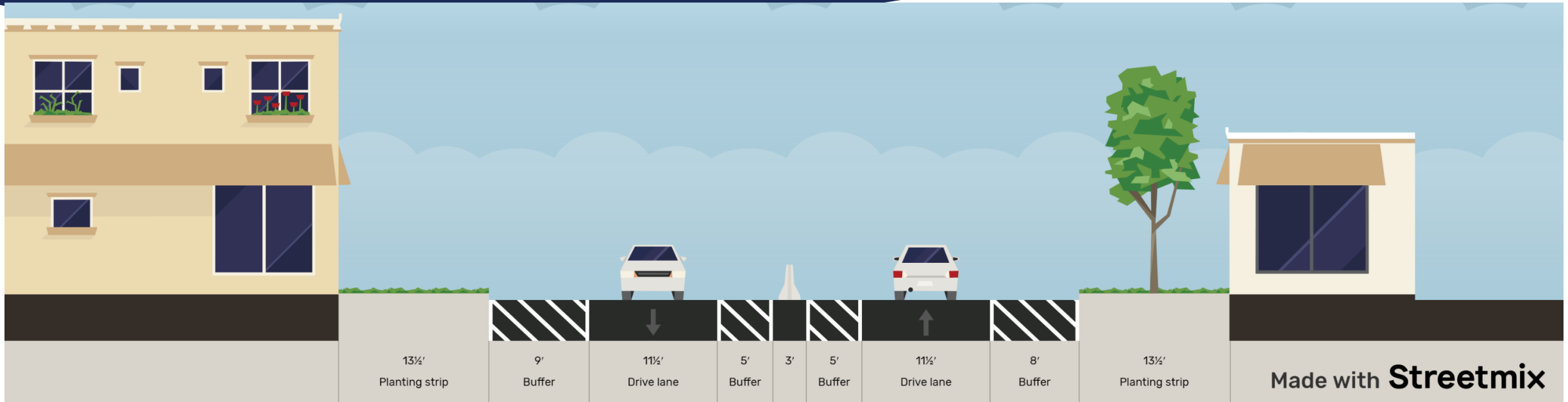
(Approx. 3 miles end to end.)



Middletown, Upper Providence



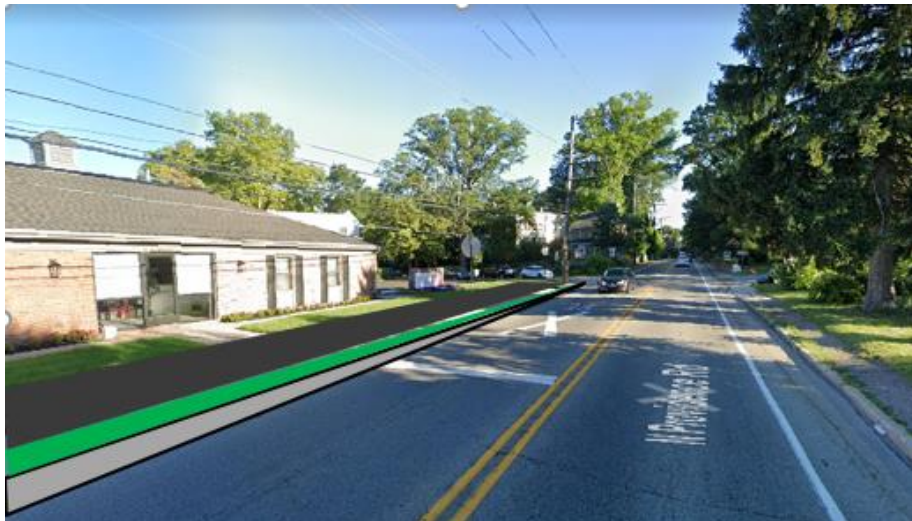
Baltimore Pike Sidepath



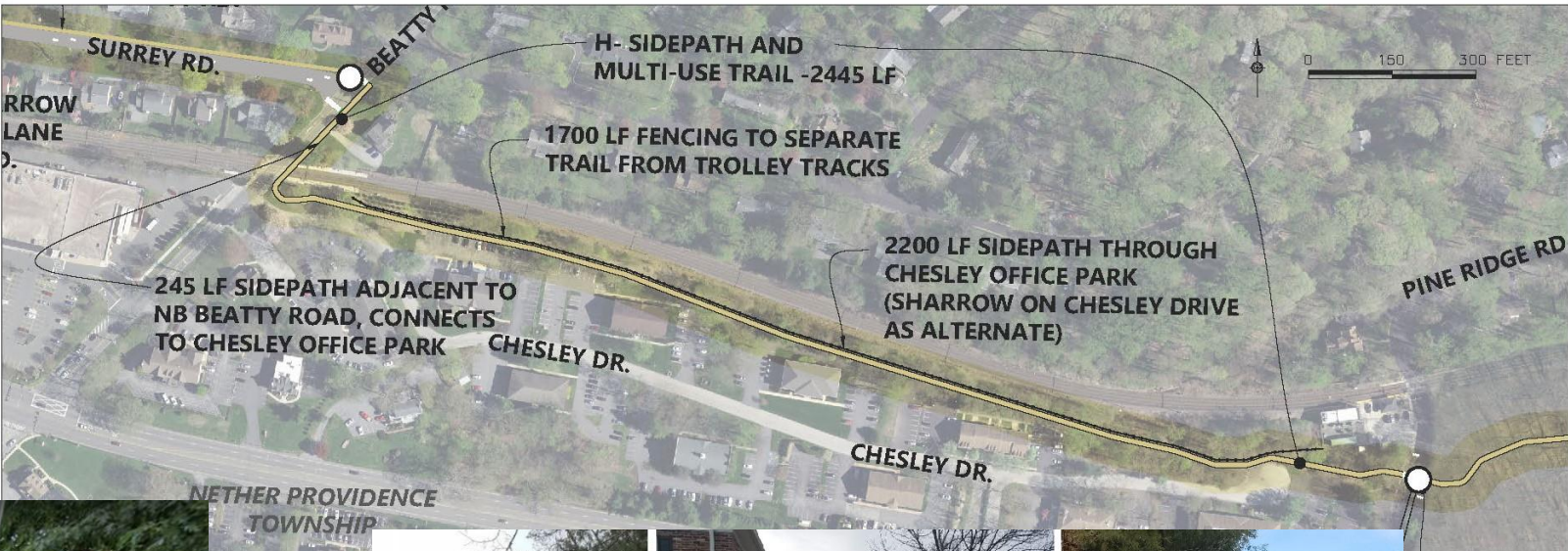
Front Street at Courthouse



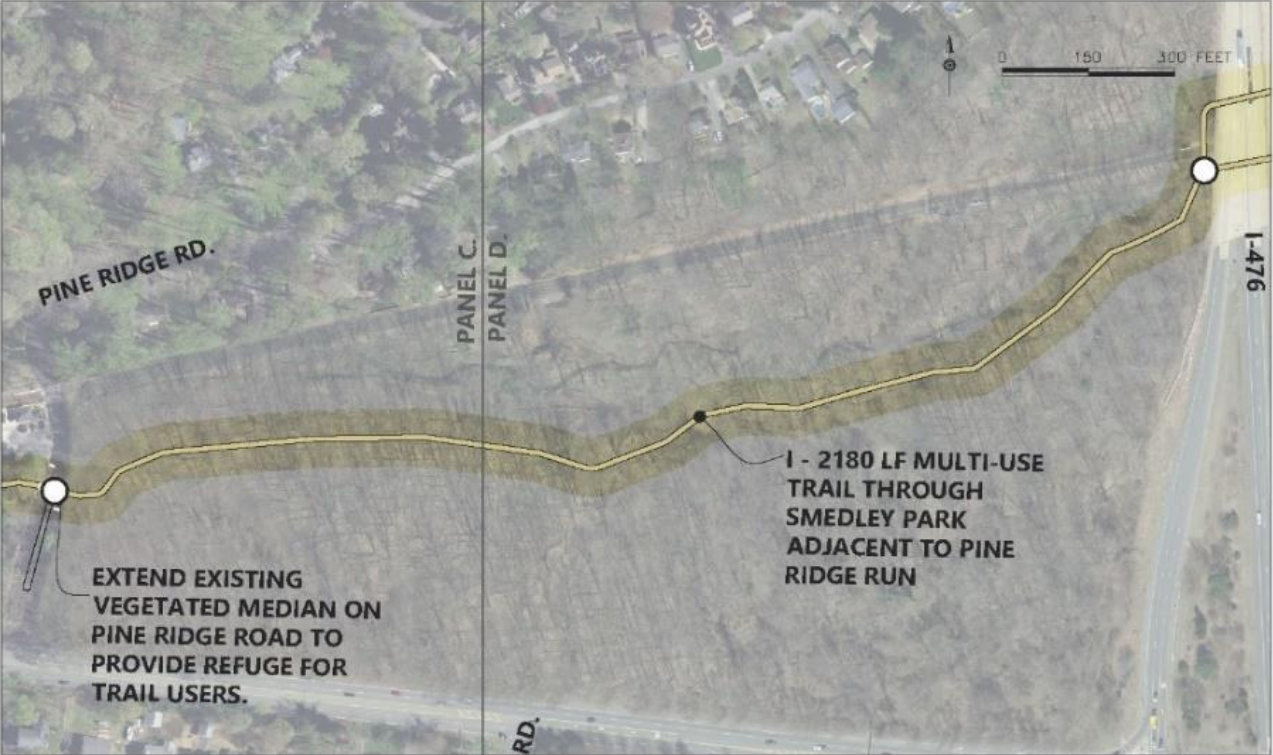
Providence Rd. Sidepath / Surrey Road



Chesley Trail/ Beatty Road



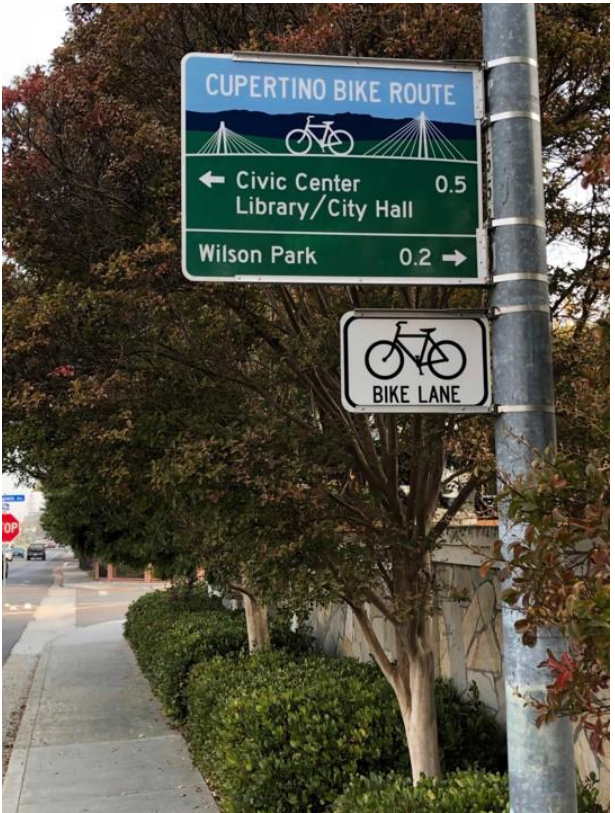
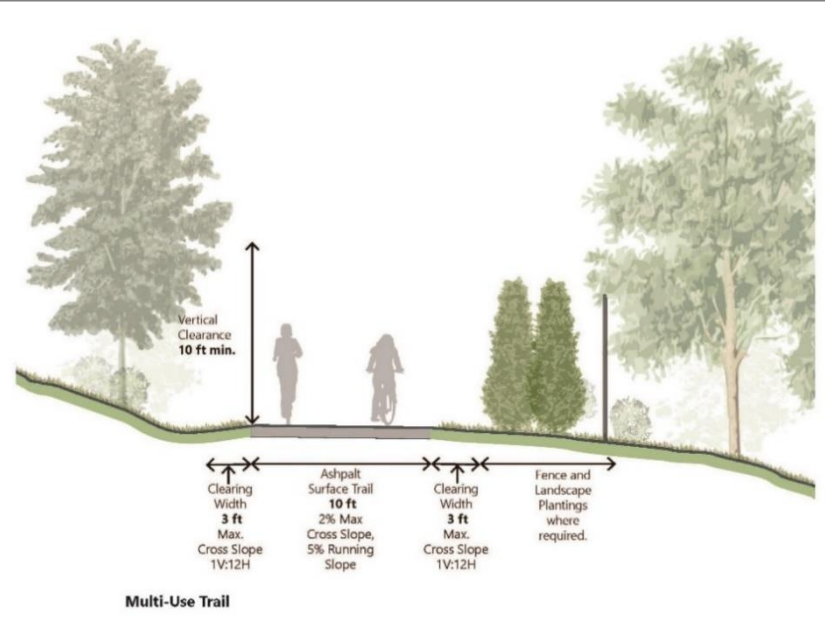
Smedley County Park



Smedley County Park



Facility Types & Design Standards, Signage & Amenities



Chapter 5 – Implementation

Outline of realistic steps for trail development and oversight, including:

- Responsible parties and stakeholders,
- Trail development sequence
- Overall oversight phases
- Challenges
- Costs and funding
- Management & Maintenance considerations

Appendices

Includes:

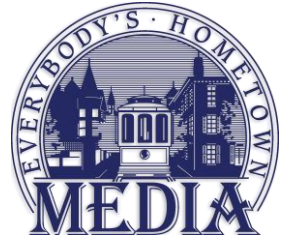
- Cost Estimate Tables
- Feasibility Matrix (technical pros & cons for alternative routes)
- Concept Plan Map Panels (hi-res)
- Important Properties Table
- Public Participation Summary

Steps for Implementation

Implementation

Project Stewardship

- Responsible Parties (municipalities, County)
- Stakeholder Organizations (local citizen support)
- Agencies (SEPTA, PennDOT)
- Trail-Wide “Committee” or Organization



Implementation

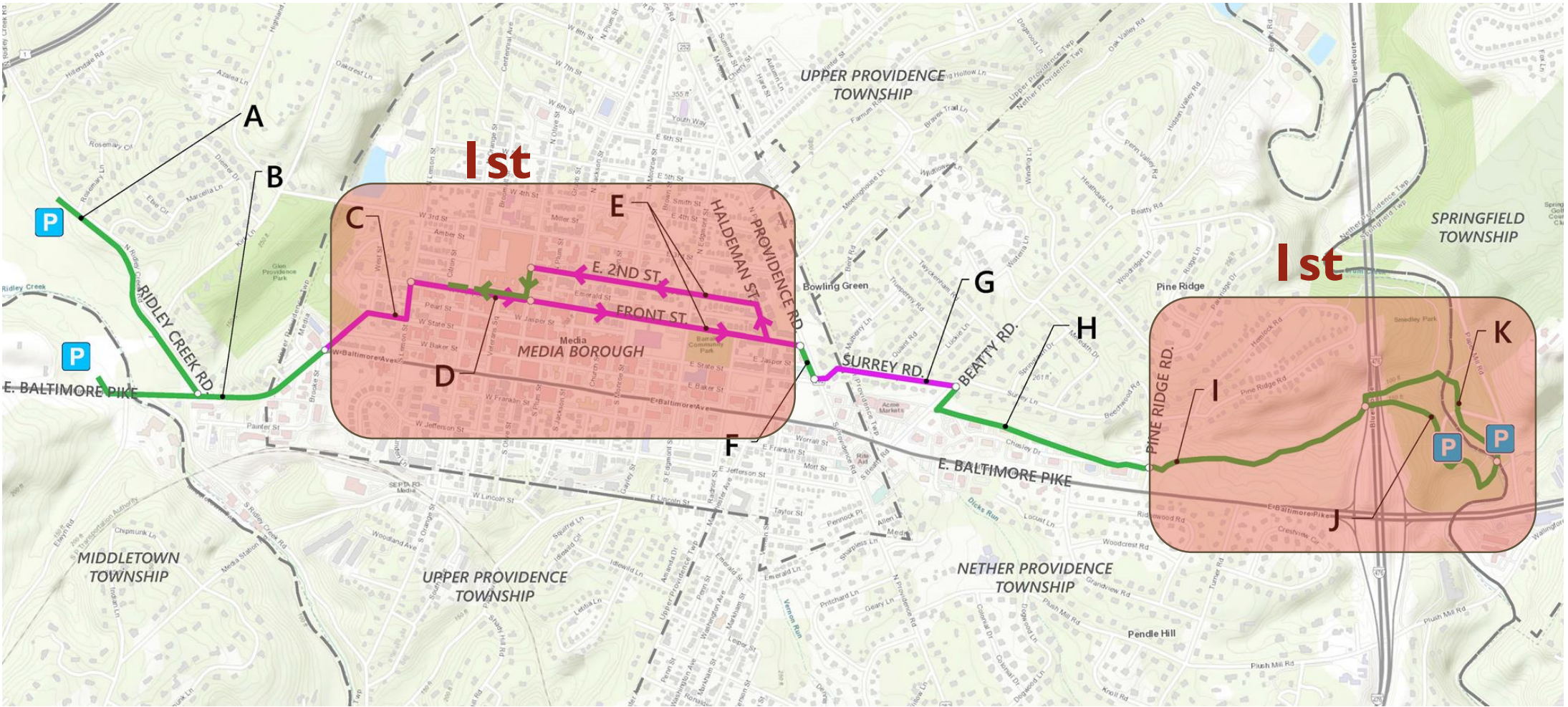
- Segment Prioritization & Phasing of Trail Development
- Trail Oversight Action Plan
- Funding Sources (Grant Agencies & Programs)



Trail Development

Recommended Sequence for Trail Development

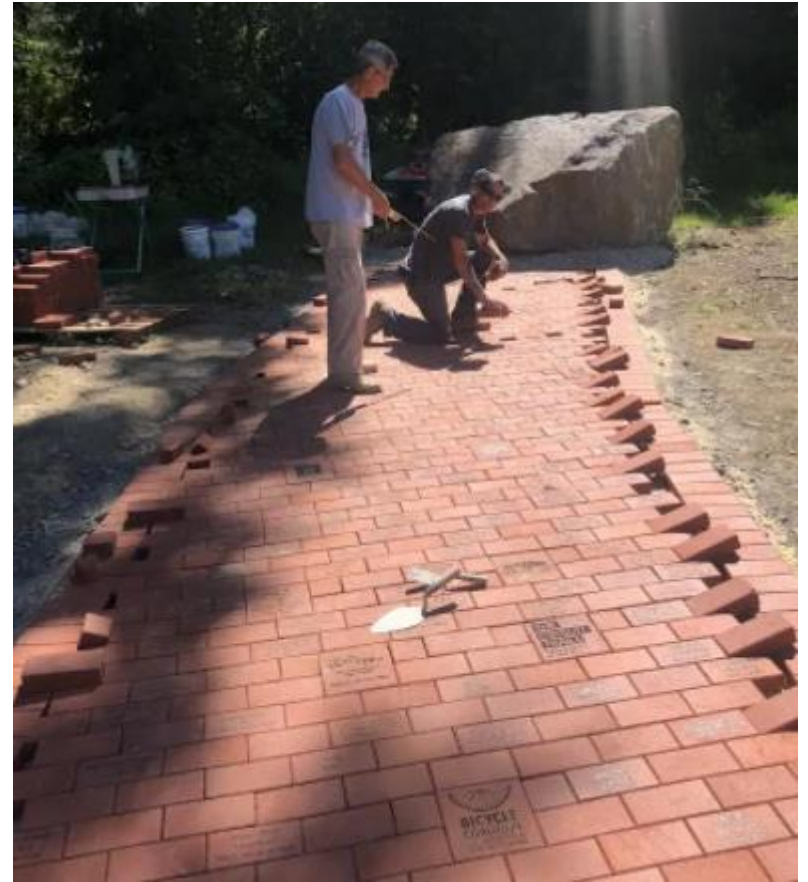
- First:
I, J, K
C, D, E
- Year 3:
A
G
H (r.o.w.)
- Beyond:
B
F
H



Trail Committee

The plan suggests the formation of a Trail Committee.

- Would be the overall driver of coordinating the trail from end-to-end, convening responsible parties and stakeholders
- Awareness and public support activities and/or fundraising campaigns.
- Organize branding of the trail (graphics and logo, whether to keep the name MSCT).



Management & Maintenance

Considerations for keeping the trail in good condition over time once it is developed.

- Trash pick-up,
 - grass trimming,
 - emergency repairs,
 - long-term maintenance.
-
- Implement PA DCNR Green Principles (sustainable parks practices).



Remaining Steps for the Study

Remaining Steps

- Polish Final Report
- County Adoption
- Post & Distribute Report



- Schedule Post-Adoption Study Committee Meetings
- Encourage Municipalities to Formally Adopt
- Begin Implementation Steps

Check project page for updates:

<https://www.delcopa.gov/planning/currentprojects/MediaSmedleyConnectorTrail.html>

Comments & Questions

General Questions & Comments – Ground Rules:

A. Submit Typed Questions and Comments

- Type and submit questions and comments in the “Q & A” chat area.
- With your question/comment, type your name and affiliation (stakeholder group) or township/borough/street of residence.

B. Response

- A member of the project team will voice each of the questions and comments.
The consultant and/or staff will respond.
- All comments are recorded even if not responded to formally during the meeting.

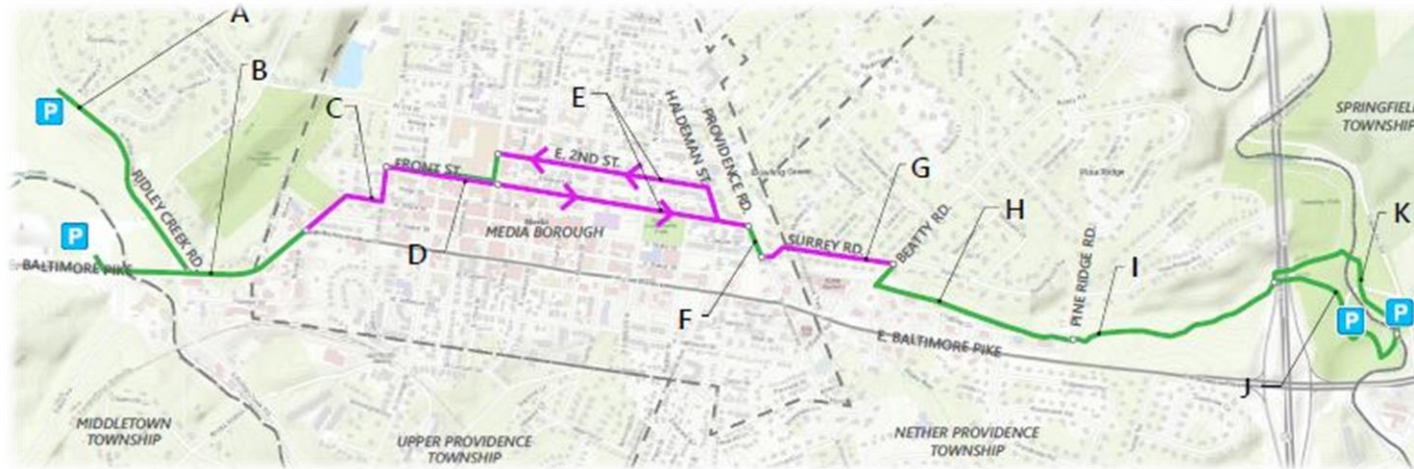
C. The meeting will end at 7:30.

Project page at the Delaware County Planning Department Website – where presentation can be downloaded:

<https://www.delcopa.gov/planning/currentprojects/MediaSmedleyConnectorTrail.html>

Thank You!

Media Smedley Connector Trail Feasibility Study



Project page:

<https://www.delcopa.gov/planning/currentprojects/MediaSmedleyConnectorTrail.html>

