



HERITAGE COMMISSION OF DELAWARE COUNTY

2023



Historic Preservation **Directory of Trades, Services, and Products**

Welcome letter from Barbara Marinelli, chair of the Heritage Commission

On behalf of the Heritage Commission, I would like to thank you for your interest in maintaining your historic building. Here in Delaware County, our heritage is very important, and is reflected in our architecture. From the log cabins of New Sweden to the Federal style brick houses of the Revolution to the Victorian streetcar suburbs, our buildings reflect the changing history of our country.

William Penn first landed in Chester in 1682, and the oldest public building, the 1724 Chester Courthouse, is still used today. The 1799 Lazaretto in Tincum Township is the oldest surviving quarantine hospital in the western hemisphere and the sixth oldest in the world. The Thomas Massey House in Marple Township shows the changing styles over time from 1696 to the mid 19th Century and how it was adapted to meet the changing needs of the Massey family.

Even if you are not the owner or manager of a historic site such as these, your building still contributes to the history of the County and it is important that it is preserved for future generations so we do not lose our heritage. Older buildings act differently than modern buildings, and as such, they require a different set of materials and techniques. The businesses listed in this directory have worked on historic buildings and know how best to maintain and improve your building. Your house has likely had several owners before you, and with good maintenance, will have many more after you. If you take on the responsibility of an older home, you are contributing to the history and heritage of the County and we thank you for your efforts.

The members of the Heritage Commission represent different municipalities and are tasked with the responsibility of overseeing and supporting the rich heritage of Delaware County. We provide information and support to all our municipalities in their efforts to maintain our great historic resources. We meet on the first Tuesday of each month in the County's facilities and our meetings are open to everyone. Please feel free to contact us if you have questions regarding historic preservation in Delaware County. We are here to help and support your mission of historic preservation in the County.

Directory Disclaimer

This Directory is a listing of companies and organizations who are known to have worked on historic buildings. Neither the Delaware County Heritage Commission, Delaware County Planning Department or the County itself make or imply any claims or promotions regarding the qualifications and/or credentials for any of those companies or organizations listed in the Directory, nor are any warranties provided in regards thereof. This Directory is provided for informational purposes only. Anyone wishing to retain the services of and/or purchase products from any of the companies or organizations in this Directory are strongly encouraged to obtain more than one bid or proposal for the services or products desired, and to request and confirm credentials and references before hiring any entity included in this Directory. Your use of this Directory indicates your acceptance of the terms of this Disclaimer.

2023 Heritage Commission Members

Barbara Marinelli, Chair

Alan Derickson

Karen Micka, Vice Chair

Paul Kahan

Elizabeth McCarrick, Secretary

Keith Lockhart

Judy Anastasi

Samuel Pickard

Stephenie Bailey

Twyla Simpkins

Kelli Cave

Delaware County Heritage Commission

610-891-5200

c/o Delaware County Planning Department

201 W. Front Street, Media, PA 19063

DelawareCountyHeritage@co.delaware.pa.us

delcopa.gov/Heritage

The Heritage Commission's mission is to oversee the rich heritage of Delaware County and to support those organizations within the County that are promoting and preserving our cultural legacy. Commission members accomplish this mission through outreach within the historic communities of Delaware County, as well as providing a resource base for these organizations and individuals.

	Pg.	Ad	Trades													
			Architectural Conservation	Art Conservation	Basements	Carpentry	Chimneys	Contractor	Doors	Furniture Restoration	Masonry/Stucco	Metalwork	Painting	Plastering	Roofing	Windows
18th Century Restorations	8	9			x		x	x			x		x	x	x	x
Alvin Holm, AIA	8	9														
Archer & Buchanan Architecture	8	11														
Architectural Window Corporation	10	11													x	
Atkin Olshin Schade Architects	10	11														
Ballinger	10															
Benner & Sons Painting	12	13										x				
Bryant Phillips Construction Inc	12	13					x									
Building Preservation Services	12	15													x	
Cherokee Construction	14	15					x									
Cottage Industries, Inc.	14	17					x									
Cullen Construction	14	17					x									
Daniel Campbell, AIA Architect	14	19														
Douglas P. Humes, Esq.	16															
Econsult Solutions	16	19														
Felber Ornamental	18												x			
H. Gilroy Damon Assoc., Inc	18															
Hanson Fine Building	18	21						x								
Hard Knox Waterproofing	20	21			x						x					
Heritage Consulting Inc	20	21														
J&M Preservation Studio	22	19														
Jacobs Wyper Architects	22	23														
Jamison Home Services LLC	22	23			x		x				x					
Jane Dorchester, Architectural Historian	24	27														
John Milner Architects	24	25														

How to use the Directory:

As many companies offer a variety of trades, services and products, they are listed alphabetically in the list above and on the next page along with the page number of their listing and their ad, if provided. We hope this new format will be more useful for you to find what you are looking for.

	Pg.	Ad	Trades													
			Architectural Conservation	Art Conservation	Basements	Carpentry	Chimneys	Contractor	Doors	Furniture Restoration	Masonry/Stucco	Metalwork	Painting	Plastering	Roofing	Windows
John Toates Architecture and Design, LLC	26	25														
JRB Historic Restoration LLC	26	27					x									x
Keast & Hood	26	29														
Knapp Masonry	28	27						x			x					
Kreilick Conservation	28		x	x							X	x				
LimeWorks.us	28	31									x		x			
Mara Restoration	30	29									x					
Mark B. Thompson Associates PC	30	33														
Michael D'Onofrio Historical Restoration	32		x	x	x		x	x			x	x			x	
Monroe Coldren & Son Antiques	32	37	x						x			x				
MR Roofing	32	33												x		
Old House Guy	34	35														
Orion General Contractors	34							x								
Paul's Pointing	34						x				x					
Pennsylvania Art Conservatory	36	35		x												
Period Architecture	36															
Pinemar	36	37						x								
Preservation Works Ltd	38	37									x		x			
R&B Restoration Carpentry	38	39				x										
Reape Jeffers & Associates	38	39														
Rittenhouse Builders	38	41						x								
Rose Valley Restorations	40		x								x					x
SBK+ Partners LLC	40	41														
Stable Hollow Construction	40	43				x	x	x			x			x		x
Streamlight Design	42															
Traditional Building	42															
Voith and Mactavish Architects	42	43														
VSBA	44	44														

Services					Type				Product														
Real Estate Appraisals																							
Preservation Consultant																							
Planning																							
Materials Analysis																							
Lighting Design																							
Law-Preservation																							
Landscape Architecture																							
Land Surveying																							
Interior Design																							
Engineering Services																							
Economic/Feasibility Analysis																							
Conservation Services																							
Architectural Services																							
Architectural Research																							
Windows																							
Salvage																							
Plaster/Mortar																							
Other																							
Millwork																							
Hardware																							
Doors																							
Cast Stone																							
Renovations																							
New Build																							
Restoration																							
Adaptive Reuse																							

18th Century Restorations, Inc.

Wesley Sessa

610-469-6649

3380 Coventryville Road, Pottstown, PA 19465

info@18thcent.com

www.18thcent.com

Our specialties include timber frame, stone, brick, and log construction, finish carpentry, masonry preservation, and the related trades necessary to preserve and restore historic structures. Please see our ad on page 9

Alvin Holm, AIA

215-963-0747

2014 Sansom Street, Philadelphia, PA 19103

alvinholmaia@aol.com

www.alvinholm.com

Alvin Holm A.I.A. Architects is a full-service general practice architectural studio specializing in traditional design in the Classical manner. We are a small office providing architecture, interiors and landscape design for a broad spectrum of clients including residential, commercial and institutional projects. As design consultants, we also collaborate with other architects across the country to share our special expertise in traditional styles and historic restoration. Please see our ad on page 9

Archer & Buchanan Architecture

Suzanne Amrich

610-692-9112

125 West Miner Street, West Chester, PA 19382

suzanne@archerbuchanan.com

www.archerbuchanan.com

At Archer & Buchanan Architecture, our philosophy begins with a belief that buildings will be inhabited for a century or more and should continue to gain character, beauty and value as the years pass. We work with clients who seek to complete historic preservation efforts requiring the addition to, or the renovation, restoration or adaptive reuse of existing structures. The historic preservation staff of Archer & Buchanan contributes significant expertise gained over twenty years of completing preservation and restoration projects for both private and public clientele—including homeowners, large institutions, public and civic organizations, and not-for profit entities. We provide services in support of historic preservation efforts that include: historic building maintenance manuals; building preservation, rehabilitation, restoration and reconstruction; adaptive reuse; historic structures reports;



18th Century Restorations, Inc.

Our skilled craftsmen preserve and restore historic architecture including houses, barns and outbuildings. We welcome small projects, for example interior and exterior woodwork, plaster masonry and pointing, as well as general contracting.

Coventry House 1733-1803 Continuing Restoration

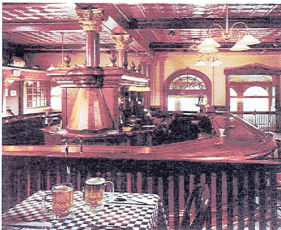


PERIOD RESTORATION PRESERVATION MAINTENANCE CONSULTATION SERVICES

18th Century Restorations, Inc. provides skilled restoration services in the Delaware Valley region to clients who exercise stewardship for historic properties.

The primary business of our company is preservation and restoration, adaptive re-use of and sympathetic additions to structures built in the 18th and early 19th centuries.

3380 Coventryville Road | Pottstown, PA 19465 | 610.469.6649 | 18thcenturyrestoration.com



ALVIN HOLM A.I.A. ARCHITECTS
2014 SANSOM STREET, PHILADELPHIA, PA 19103



www.alvinholm.com (215) 963 0747

building conditions assessments; historic resource surveys; national register nominations; and historic rehabilitation tax credit assistance.

Please see our ad on page 11

Architectural Window Corporation

Mike Morton

(W) 877-286-1881 (C) 860-836-1630

1901 E Hazzard Street, Philadelphia, PA 19125

mike.m@arch-window.com

www.arch-window.com

Architectural Window Corp. is a full service supplier of historic windows, shutters, exterior doors and storefronts. We are sensitive to the historic fabric of the buildings in these historic cities and offer products that respect that tradition. We offer fenestration surveys of buildings, recommendations and shop drawings of proposed products, submittal and review with both local and national historic commissions, as well as supplying and installation, if required, of all our products.

Please see our ad on page 11

Atkin Olshin Schade Architects (AOS)

Sam Olshin FAIA

215-925-7812

125 S. 9th Street, Suite 900, Philadelphia, PA 19107

Sam.olshin@aosarchitects.com

www.aosarchitects.com

AOS is a nationally recognized award-winning architecture, preservation, and planning firm. AOS provides feasibility studies, master plans, and architectural services for new, renovation and adaptive re-use projects throughout the region and beyond.

Please see our ad on page 11

Ballinger

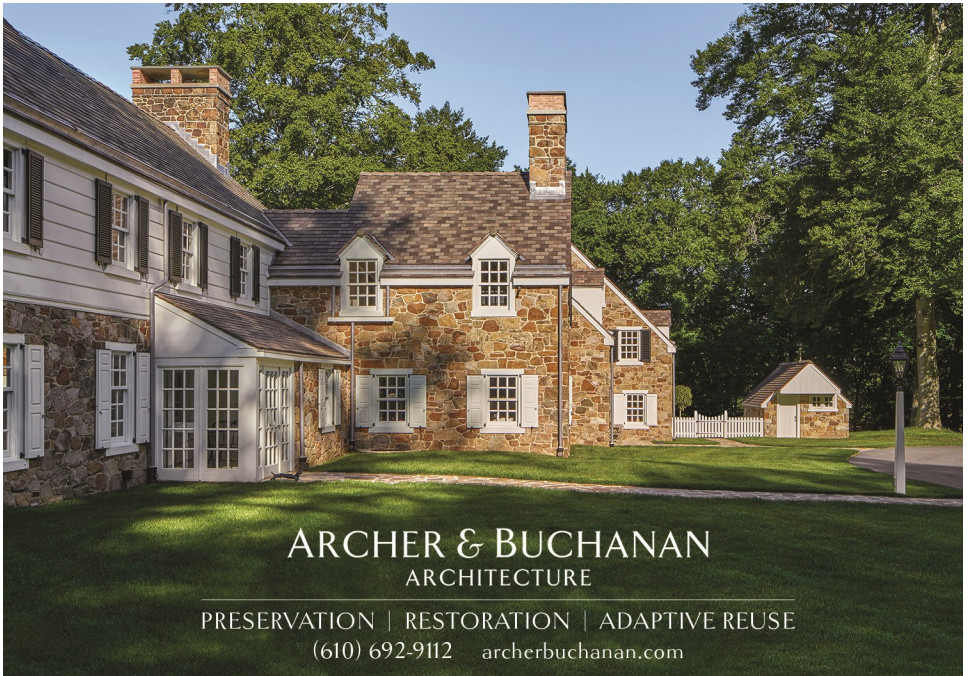
215-446-0900

833 Chestnut Street, Suite 1400, Philadelphia, PA 19107

contact@ballinger.com

www.ballinger.com

Our integrated team of architects, engineers, planners, and interior designers works with visionary institutions to create places that empower those who shape the future.



ARCHER & BUCHANAN ARCHITECTURE

PRESERVATION | RESTORATION | ADAPTIVE REUSE
(610) 692-9112 archerbuchanan.com

Architectural Window Corp.

of
BALTIMORE • BOSTON • CONNECTICUT
NEW YORK • PHILADELPHIA • WASHINGTON, DC

We invite you to review our product offerings and welcome an opportunity to assist you on your next project.



German Silk Weaving Factory



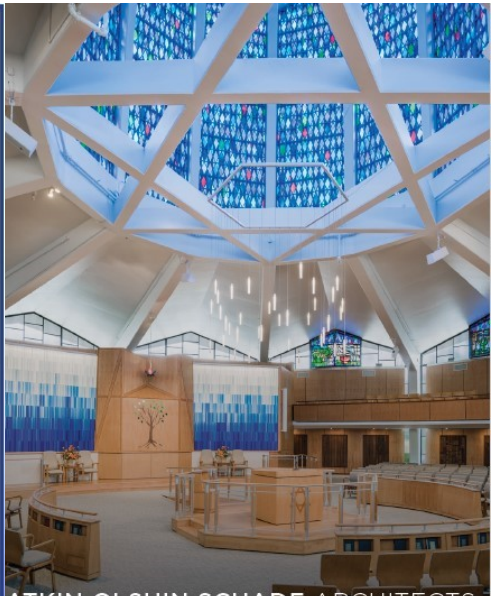
Artgraph Apartments

Architectural Window is a full service supplier of historic windows, shutters, exterior doors and storefronts. We are sensitive to the historic fabric of the buildings in these historic cities and offer products that respect that tradition.



Markiss Dairy

Architectural Window offers feasibility surveys of buildings, recommendations and shop drawings of proposed products, submittal and review with both local and national historic commissions, as well as supplying and installation, if required, of all our products.



ATKIN OLSHIN SCHADE ARCHITECTS

125 South Ninth Street, Suite 900 PHILADELPHIA, PA 19107
215-925-7812 | www.aosarchitects.com

1901 E. Hazzard Street, Philadelphia, PA 19125
Phone (877) 286-1981 | Fax (800) 933-9765 | www.arch-window.com | info@arch-window.com

Benner & Sons

Scott Benner

610-353-4850

4977 West Chester Pike, Newtown Square, PA 19073

sales@bennerandsons.com

www.bennerandsons.com

For over 100 years Benner & Sons has been known as a leader in the painting and wallcovering industry. We specialize in residential, commercial, and restoration/renovation painting services. In addition, we offer many other related services including wallcovering, drywall repair/installation, plaster repair, wood rot repair, and power washing. We are a lead safe certified, licensed, bonded, and insured professional contractor, and we currently serve Pennsylvania, Delaware, Maryland, and New Jersey.

Please see our ad on page 13

Bryant Phillips Construction Inc.

David Carey

610-687-0419

45 Berkley Road, Suite 203, Devon, PA 19333

Bryantphillipsconstruction@verizon.net

www.bryantphillipsconstruction.com

Bryant Phillips Construction is a General Contractor that renovates and restores older residences in Delaware County and surrounding area since the year 2000. We have had the opportunity to have had two projects win a Preservation Alliance for Greater Philadelphia award in the past 12 years. Also, both the local Trumbauer award and the national Palladio award for our work in the renovation local residences. Fully licensed and insured, plus we are an EPA Lead Certified Company. We have a team of trusted trades people that will bring your home back to when it was first built.

Please see our ad on page 13

Building Preservation Services

John Lindtner

302-983-4056

PA #066630

buildingpreservationservices@gmail.com

www.buildingpreservationservices.com

There is a certain charm about older homes. At Building Preservation Services, we understand and appreciate this charm – the attention to detail, the intricacies in their design, and the craftsmanship involved in their construction. For this reason, we provide specialized services focused on restoring your home's old, wooden windows. Please see our ad on page 15



GIVE YOUR CABINETS A MAKEOVER THAT WILL CHANGE THE ENTIRE LOOK OF YOUR KITCHEN.

Cabinet painting is very popular these days because it is a cost-effective alternative to renovating and much less intrusive.



Benner & Sons
 PAINTING
 WALLCOVERING
 DRYWALL PA 10827
610-353-4850
bennerandsons.com
CALL TODAY FOR A FREE ESTIMATE!



We know that your home is very important to you and Benner & Sons is a company you can trust.

We are here to answer your questions, help you define your goals and work together with you to personalize your living space.


BRYANT PHILLIPS
 CUSTOM RESTORATION AND RENOVATION

Providing unparalleled craftsmanship and quality in the restoration and renovation of historic homes in the Philadelphia area.

BRYANT PHILLIPS CONSTRUCTION
 45 Berkley Rd, Ste 203
 Devon, PA 19333
 610.687.0419



bryantphillipsconstruction.com

HIC PA035589

Photo by Tom Crane

Cherokee Construction

215-248-1800

820 Paper Mill Road, Wyndmoor, PA 19038

Info@CherokeeConstruction.com

www.CherokeeConstruction.com

Cherokee Construction is a high-end residential and commercial construction company, offering a full range of construction management services. Located in Wyndmoor, just outside Philadelphia, Cherokee Construction services Philadelphia, the Main Line, Eastern Montgomery County, Bucks County, as well as Delaware and Chester Counties.

Please see our ad on page 15

Cottage Industries

Adam Sherman/ Nicholas Walker

610-293-9750

237 W. Lancaster Ave, Suite 200, Devon, PA 19333

info@CottageIndustriesInc.com

www.cottageindustriesinc.com/

Design/Build - Renovations, Additions, Restorations

Please see our ad on page 17

Cullen Construction Inc.

Brad Smith, Director of Operations

610-687-4949

329 E. Conestoga Rd. Wayne, PA 19087

Brad@cullenconstructioninc.com

cullenconstructioninc.com

Cullen is a full-service construction company specializing in historic restoration of residential homes to include outbuilding, barns, springhouses, summer kitchens, etc.. We partner with architectural and design professionals of note in the county collaborating on high end finishes and attention to detail.

Please see our ad on page 17

Daniel Campbell, AIA Architect

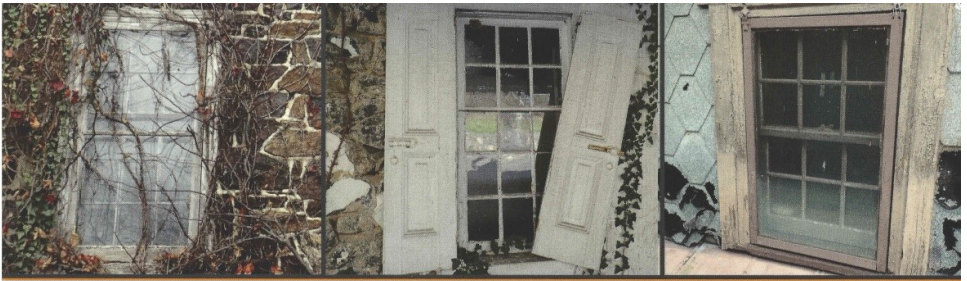
610-344-3402

930 Oakbourne Road, West Chester, PA 19382

campbelldt@verizon.net

www.danielcampbellarcht.com

Year established: 2011. Daniel Campbell is a multi-state licensed architect with over 35 years of experience in architecture and historic preservation. Dan manages architectural projects through all phases of the process including surveys, measured drawings, code analysis, condition assessment, restoration



Hope for your old wooden windows

Old house? Old windows?

We specialize in repairing and restoring wooden windows for older homes and buildings in Chester County and the surrounding area.

302-983-4056

Building Preservation Services, LLC



design, adaptive re-use design, construction documentation, bidding and contract administration. He provides Historic Preservation Planning reports; conducting architectural conditions-assessments himself, while leading and directing teams of consultants in the structural, and MEP engineering and materials conservation fields, and overseeing the calculation of restoration budgets.

Work is focused primarily on historic buildings and sites in Delaware, Chester and Lancaster Counties, PA; also in Delaware State, New Jersey and Maryland. Restoration projects have included significant National Register and National Historic Landmark buildings, required to comply with the Secretary of the Interior's Standards for the Treatment of Historic Properties. Dan makes submissions and presentations to Historic Architectural Review Boards (HARBs) locally and the Historical and Museum Commission (PHMC). Dan's architecture degree, licensure and experience qualify him as an Historic Architect under the Code of Federal Regulations, 36 CFR Part 61. Dan makes submissions and presentations to Historic Architectural Review Boards (HARBs) and the Historical and Museum Commissions (PHMC) and locally.

Examples of Projects:

Historic Structure Report for the Andalusia Big House, Bensalem, Bucks County, PA; Preservation Plan for Nitre Hall, Haverford Township Historic Society, Delaware County, PA; Restoration of 1860 Maria Hall (after a fire), Villa Joseph Marie High School, Holland, Bucks County, PA; Restoration of Castle Valley Mill and Stover-Myers Mill, Bucks County, PA; Conditions Assessment and Restoration documents, for various house museums, churches and meetinghouses. Please see our ad on page 19

Douglas P. Humes, Esq.

610-724-7222

Millridge Manor House, 975 Mill Rd Box E, Bryn Mawr, PA 19010

humeslaw@verizon.net

Law Specialties: Real estate, historic preservation, estate planning, estate administration, corporations, LLC's, partnerships.

Econsult Solutions, Inc.

Peter A. Angelides, Ph.D.

215-717-2777

1435 Walnut Street, 4th Floor Philadelphia, PA 19102

Angelides@econsultsolutions.com

www.econsultsolutions.com

Econsult Solutions understands the true value of protecting the rich historic resources that complete our communities. We provide expansive and comprehensive analyses and evaluations to help support and encourage



Designers
Builders
Managers

Renovations
Additions
Restorations

An Investment In Excellence



COTTAGE
INDUSTRIES
INCORPORATED



CULLEN
CONSTRUCTION

(610) 687-4949

WWW.CULLENCONSTRUCTIONINC.COM

REDEFINING THE BUILDING EXPERIENCE

investment in historic preservation and conservation.

With our extensive background in quantitative and qualitative impact analyses, fiscal and economic impact modeling, asset evaluation, and strategic planning, we provide a full picture of all benefits and impacts that come with rehabilitating and preserving historic structures. We document the quantitative analyses and qualitative impacts that supplement project planning and evaluations.

Our business advisory services for historic preservation include:

- Economic Impact Analyses
- Fiscal Impact Analyses
- Impacts from Federal and State Tax Credit Programs
- Property Value Impacts and Evaluations
- Qualitative Impact Analyses
- Project Feasibility Evaluations

Please see our ad on page 19

Felber Ornamental

Bethany Baldwin or Adrian Taylor

(610) 275-4713

106 Shamrock Lane, Parkesburg, PA 19365

info@felber.net

www.felber.net

Felber Ornamental specializes in traditional Plaster Mouldings and GFRG ornament. We have one of the country's largest collections of existing designs and offer a full complement of custom work as well.

H. Gilroy Damon Associates, Inc.

Phil Damon

610-583-4100

P.O. Box 1158, 1343 Chester Pike, Sharon Hill, PA 19079

phil@damonengineers.com

www.damonengineers.com

Civil Engineers and Land Surveyors Providing Professional Services Since 1894

Hanson Fine Building

Christine McPoyle – Office Manager

215-483-8338

86 W Johnson St, Philadelphia, PA 19144

info@hansonfinebuilding.com

www.hansonfinebuilding.com

Hanson Fine Building, Inc. specializes in fine renovations, custom additions,

Daniel T. Campbell, AIA ARCHITECT

610-344-3402

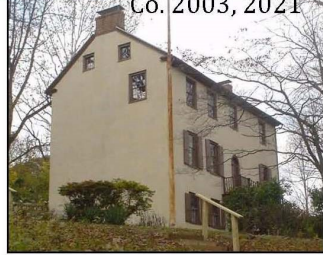
Embreeville Scale House, Chester Co. 2019



Maria Hall, Bucks Co., 2015



Nitre Hall, Delaware Co. 2003, 2021



Award-Honored Preservation

www.danielcampbellarcht.com

CELEBRATING 10 YEARS 2008-2018

ESI CONSULT SOLUTIONS INC. economics | strategy | insight

215-717-2777 | econsultsolutions.com



Econsult Solutions understands the true value of protecting the rich historic resources that complete our communities.

- Economic Impact Analyses
- Fiscal Impact Analyses
- Impacts from Federal and State Tax Credit Programs
- Property Value Impacts and Evaluations
- Qualitative Impact Analyses
- Project Feasibility Evaluations

J&M PRESERVATION STUDIO

ARCHITECTURAL DESIGN
STRUCTURAL ENGINEERING
HISTORIC PRESERVATION
WBE



WWW.JMPRESERVATION.COM

215 769 1133 INFO@JMPRESERVATION.COM

sustainable new construction, and historic preservation for older homes and historic structures in Greater Philadelphia. Please see our ad on page 21

Hard Knox Waterproofing

Ed Knox

1-800-515-1933

Upper Chichester, PA

closeddeal1@icloud.com

www.hardknoxwaterproofing.com

Basement Waterproofing, Mold Remediation, Structural Repair, Crack Repair, Crawlspace Repair, Indoor Stucco for Stonewalls, and Mold Removal for walls, making them look new again. All of these professional services will add value to your home. We are Waterproofing Experts that have been providing and mastering our home improvement service for more than 30 years. Whether you need help with your Basement, Crawlspace, or Mold Remediation, give Hard Knox a call!

Waterproofing isn't the only thing we've mastered. We also take tremendous pride in our ability to provide all types of Structural Repairs, Mold Remediation, and more. Let our skilled team help with basement demolition, debris removal, and improving the aesthetics of your basement, making what was once thought of as your dungeon a livable space. Don't hire inexperienced amateurs. Call the professionals to add value to your home.

Please see our ad on page 21

Heritage Consulting Inc.

Donna Ann Harris, Principal

267-251-5444

422 South Camac Street, Philadelphia PA 19147

heritageconsultinginc@gmail.com

www.heritageconsultinginc.com

Donna Ann Harris is the principal of Heritage Consulting Inc. a Philadelphia-based consulting firm, that aids non-profit organizations and government agencies in Delaware County (PA) and elsewhere in the following practice areas: downtown and commercial district revitalization, historic house museum strategic plans and audience development, heritage tourism product development, and non-profit organizational development.

Ms. Harris is the author of the second edition of *New Solutions for House Museums: Ensuring the Local Term Preservation Of America's Historic Houses* published by Rowman and Littlefield/American Association for State and Local History in 2020. This book has been the best seller for AASLH since its first publication in 2007. Our clients have won prestigious awards from the Preservation Alliance for Greater Philadelphia including Delaware County (PA)

HANSON

FINE BUILDING & PRESERVATION



(215) 483-8338 . WWW.HANSONFINEBUILDING.COM



HARD KNOX WATERPROOFING

Hard Knox Waterproofing is committed to satisfying applicable requirements by demonstrating continual improvement in the value of our products, services and employees.



Google
5 Star
Business Partner



BEST OF
2021 WINNER



IAQA



W.S.



Angi
2021

**In-House
Financing
Available**

GRANTED BY THE GOVERNOR OF PENNSYLVANIA

"Hired a lot of contractors over the years to do work at my house. Never did I see workers work as hard as Hard Knox. These men were neat, clean and efficient. Great job, thank you!"
- Denise S

"Had a water and mold issue in my basement. Could not be more satisfied with the work performed at my house. No more water, no more mold. Great job!"
- Andrew K

CALL NOW FOR CONSULTATION

BASEMENT & CRAWL SPACE WATERPROOFING
MOLD REMEDIATION
STRUCTURAL REPAIR
UNDERPINNING - STAR BOLTS - CONCRETE WORK
Transferable Lifetime Guarantee -

Waterproofing is for the lifetime of the structure

1-800-515-1933

www.hardknoxwaterproofing.com

LICENSE
PA HIC169133 • DE 2022279352 • NJ 13VH12234100

20% OFF

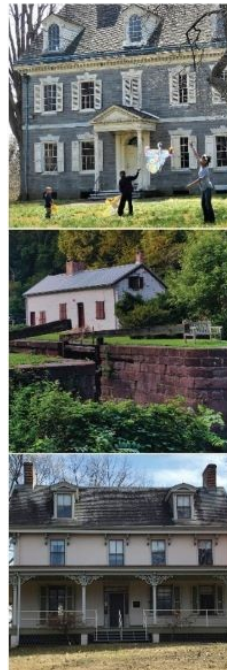
(up to \$950 discount)
total price of job

With this coupon. Not valid with other offers or prior services.

FREE

basement inspection
and consultation

With this coupon. Not valid with other offers or prior services.



SECOND EDITION

New Solutions for House Museums

*Ensuring the
Long-Term
Preservation of
America's
Historic Houses*

DONNA ANN HARRIS

Public History Project, Camden County (NJ) History Week and Haddon Heights (NJ) Design Guidelines. Please see our ad on page 21

J&M Preservation Studio

Melanie Rodbart, PE

215-769-1133

105 Rutgers Ave, #244, Swarthmore, PA 19081

info@jmpreservation.com

www.JMPreservation.com

J&M Preservation Studio is an award-winning certified Women's Business Enterprise (WBE) that offers professional architectural and structural engineering services for historic and existing buildings to a diverse array of clients. J&M was founded in 2013 by Jessica Senker, AIA, and Melanie Rodbart, PE, and has dedicated over thirty-five years to design and historic preservation. J&M has been honored to work on 9 National Historic Landmark sites, and more than 60 historically significant properties. J&M provides the individualized attention and effective communication skills of a small firm, with the resources and knowledge of a large firm. Long-standing relationships with professionals in related disciplines enable J&M to provide a comprehensive team approach when required. Please see our ad on page 19

JacobsWyper Architects

215-985-0400

1232 Chancellor Street, Philadelphia, PA 19107

marketing@jacobswyper.com

Jacobswyper.com

JacobsWyper Architects is an award-winning architectural, planning and interior design firm founded in 1981. Based in Philadelphia, with an office in Raleigh, N.C, and Austin, TX our work has taken us both across the U.S. and the world. We are drawn to complex projects – those that combine high-design, high-technology, and human-centered values. Our historic restoration and preservation services provide expertise in historic building envelope architecture, historic structure reports, building condition assessment reports, specialized owner consultation, feasibility and master plan studies, preservation planning for buildings and sites. Please see our ad on page 23

Jamison Home Services, LLC

Stephen Weihing

215-884-7000

1429 Ulmer Avenue, Oreland, PA 19075

info@jamisonhomeservices.com

www.JamisonHomeServices.com



JACOBS WYPER ARCHITECTS

PHILADELPHIA | RALEIGH | AUSTIN

Architecture, Masterplanning, Interior Design,
Historic Preservation and Adaptive Reuse

jacobswyper.com



Over 30 Years Of Expert Service

We work to exceed your expectations on every job we touch. As with all of the work we do, your family's comfort and safety are our highest priority.



Licensed, Bonded & Insured
PA 5252 | NJ 13VH10957100

Call today for a FREE ESTIMATE! 215-884-7000

JamisonHomeServices.com

Jamison Home Services has been serving Bucks County, Montgomery County, Chester County and Delaware County for well over 30 years. Our Industry certified technicians deliver superior solutions. From start to finish, We take great pride in making sure each job is done right, the first time. Whether you need chimney services, basement waterproofing solutions, stucco repair and remediation or complete masonry restoration, you can count on our team. Please see our ad on page 23

Jane E. Dorchester, Architectural Historian

610-431-3737

1412 Valley Drive, West Chester, Pa. 19382

jeditorhspv@gmail.com

I provide a wide range of architectural history/preservation consulting services throughout the Southeastern Pennsylvania region, but especially in the Delaware/Chester County area. The services I offer include, but are not limited to, historic property researches, historic resource inventories and surveys, National Register nominations, and historical evaluations.

Please see ad on page 27

John Milner Architects, Inc.

Christopher Miller, Principal

610-388-0111

104 Lakeview Drive, Chadds Ford, PA 19317

info@johnmilnerarch.com

www.johnmilnerarchitects.com

John Milner Architects is a collaborative team of design professionals that honors the continuum of architecture by creating new buildings inspired by classic American and European traditions, and by preserving historic buildings which connect us to our unique and diverse cultural heritage. Since the preservation and restoration of historic buildings has always been an integral part of our practice, we are well versed in the specifics of design and detail that contribute richness to a broad architectural palette. Our clients share our commitment to thoughtfully-designed and finely-crafted residential environments, employing a traditional vocabulary while recognizing the requirements of contemporary family life. The firm's projects involve new construction as well as the renovation of significant existing buildings, and are located in wide variety of urban and rural settings. We pride ourselves on our collaborative approach with clients and all participants of the design and construction process.

Please see our ad on page 25

JOHN MILNER ARCHITECTS
DESIGN & PRESERVATION
Church of the Redeemer Parish House, Bryn Mawr



Renovation and addition to Wilson Eyre Property in Chestnut Hill, PA



JOHN TOATES ARCHITECTURE & DESIGN
www.ToatesArchitecture.com (484) 725-7978

John Toates Architecture and Design, LLC

John Toates, RA Owner

484-725-7978

P.O. Box 325, Devon, PA 19333

John@ToatesArchitecture.com

www.ToatesArchitecture.com

John Toates Architecture and Design LLC is a full service architecture and design firm that offers a guided, collaborative, comprehensive and creative design experience to a comprehensive range of master planning, landscape, architectural and interior design services. John Toates and his partner Mark L. Hoffman have more than 50 years of combined experience in designing and managing home projects of unquestionable elegance and sophistication, making them ideal experts to guide you through the experience of designing and building a new home, renovation, addition or outbuilding. JTAD's architects bring to every project their expertise in history, proper usage of materials, and accuracy of details without pretension or inflexibility. The firm's architects have a reputation for being approachable and easy to work with, complemented by passion, attentiveness and personal investment in every project, to ensure the client's complete satisfaction with the entire experience. Please see our ad on page 25

JRB Historic Restoration, LLC

Jeff Barr

215-247-2107

7153 Sprague St #F, Philadelphia, PA 19119

jrbrestoration@yahoo.com

www.jrbrestoration.com

Historic Restoration Carpentry, Project Management and Consulting

Specialties- wood window restoration, carpentry

Please see our ad on page 27

Keast & Hood Structural Engineers

215-625-0099

1635 Market St. Suite 1705, Philadelphia, PA 19103

bwentz@keasthood.com

<https://keasthood.com/>

Keast & Hood provides Structural Engineering services for private and commercial buildings including condition assessments, feasibility studies, temporary stabilizations, renovations, restorations, and additions.

Please see our ad on page 29

Jane E. Dorchester
Architectural
Historian
610•431•3737

HISTORIC PRESERVATION
CONSULTING

1412 Valley Drive
West Chester, PA 19382
jeditorhspv@gmail.com

KNAPP MASONRY

"Brick by Brick"

- HISTORIC RESTORATION
- BRICK AND STONE POINTING
- GENERAL CONTRACTING
- STUCCO REPAIR AND APPLICATION
- CONCRETE REPAIR
- CAULKING AND CLEANING
- STRUCTURAL STABILIZATION



VERN AND JENNIFER KNAPP • 121 CHARLES ROAD MAGNOLIA, NJ
08049 • PHONE: 856-783-5374 • FAX: 856-783-7881

WWW.KNAPPMASONRY.COM

JRB HISTORIC RESTORATION, LLC

HISTORIC PRESERVATION DESIGN & CONSTRUCTION SERVICES



SPECIALIZING IN
WINDOW RESTORATION & WOOD STORM WINDOWS
RESTORATION CARPENTRY
PORCH AND CORNICE RESTORATION
SPECIALTY WOODWORK & MILLWORK REPRODUCTION
PRESERVATION CONSULTING & PROJECT MANAGEMENT

WWW.JRBBESTORATION.COM

215-247-2107

7153 SPRAGUE STREET #F • PHILADELPHIA, PA 19119

Knapp Masonry LLC

Jennifer and Vern Knapp

856-783-5374

121 Charles Road, Magnolia, NJ 08049

jen@knappmasonry.com or vern@knappmasonry.com

www.knappmasonry.com

Instagram coming soon! We primarily perform historic masonry preservation and restoration-stone and brick work pointing, patching, caulking, and structural work with architects and engineers, and new work if tied in with a restoration project.

Most of our projects are in Northern NJ and Philadelphia area, and we've done work in Delco at Swarthmore College on their Old Tarble Building and over at Haverford College on various walls and buildings on campus.

Please see our ad on page 27

Kreilick Conservation, LLC

Scott Kreilick

215-205-4561

519 Toll Road, Oreland, PA 19075

skreilick@kreilickconservation.com

www.kreilickconservation.com

Kreilick Conservation, LLC provides laboratory and field analysis of materials, condition assessments, emergency response and stabilization, treatment, documentation, and maintenance of architecture, monuments, sculpture, and objects specializing in historic metals and masonry.

LimeWorks.us

215-536-6706

3145 State Road, Telford, PA 18969

sales@limeworks.us

limeworks.us

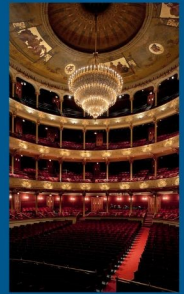
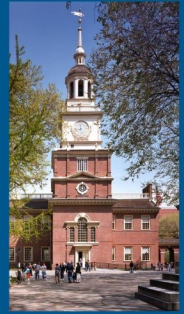
LimeWorks.us is a full-service sustainable and historic masonry supply company, that specializes in lime mortars, plasters, stone/brick patching, hempcrete, and paint. LimeWorks.us also offers an extensive list of laboratory services for the historic preservation professional, building owner, or contractor including our professionally produced Historic Mortar Analysis. Our analytical lab can create customized mortars, plasters, and mineral paints that are fit for purpose to suit your project's specific performance requirements. The Craftwork Training Center at LimeWorks provides hands-on workshops on traditional skills.

Please see our ad on page 31

Leaders in the preservation, adaptive reuse, and restoration of historic structures for 70 years

Founded in 1953, Keast & Hood Structural Engineers is a certified women-owned small business

www.keasthood.com



Mara
restoration

COMMERCIAL RESTORATION & HISTORIC PRESERVATION SPECIALISTS



- Masonry Restoration
- Historic Preservation
- Structure Inspection & Repairs
- Coatings & Waterproofing
- Masonry Cleaning
- Stucco/EIFS Repair
- Brick/Stone Pointing, Repair & Replacement

215-887-9900

MARARESTORATION.COM

Mara Restoration

Steve Stoughton

215-887-9900

150 Roesch Avenue, Oreland PA 19075

[sstoughton@mararestoration.com](mailto:ssoughton@mararestoration.com)

www.MaraRestoration.com

Mara Restoration is a full-service masonry restoration and preservation contractor, specializing in commercial and historic properties.

Please see our ad on page 29

Mark B. Thompson Associates PC

Claire Donato, AIA

215-985-1000 extension 111

502 South 24th Street, Philadelphia, PA 19146

cdonato@mbtarchitects.com

www.mbtarchitects.com

Mark B. Thompson Associates, PC (MBTA) is an architecture and planning firm that has supported institutions and their missions for nearly 50 years. MBTA's concentration in historic preservation complements and supports our commitment to people and their habitats, through the preservation and rehabilitation of the community's cultural resources and landscapes. Projects range from the restoration and/or adaptive reuse of National Historic Landmark sites to the preservation and/or renovation of individual buildings in historic districts or of more focused local interest.

Located in Center City Philadelphia, MBTA was founded to create architecture that enhances the quality of life for the individual and for the community, serving clients with effective planning, historic preservation, sustainable solutions, and durable architecture.

MBTA was designed, organized, and staffed in response to the needs of historic property owners and provides the kind of planning, design, and technical resources demanded by challenging restoration and adaptive reuse projects. MBTA's function is to wholly understand the mission, the values, and the character of each project and program and to engage the project leadership, staff, and community in developing strategies and programs geared towards the fulfillment of its mission.

Among the full-service architectural and planning services offered by MBTA, we include a focus in historic architectural services. These services include Conditions Assessment, Master Planning, Preservation Planning, Adaptive Reuse, and Historic Restoration.

Please see our ad on page 33



Bring your piece of history back to life and preserve your legacy with help from Craftwork Training Center. We teach time-honored skills and fine craftsmanship for historic masonry restoration; provide training, certifications, and continuing education workshops for preservation and trade contractors, craftsmen, artisans, and homeowners; and emphasize preservation standards, sustainable materials, and building better with breathable lime mortars and plasters from LimeWorks.us.



Michael D'Onofrio Historical Restoration (MDHR)

610-446-2844

16 N Bryn Mawr Ave #930, Bryn Mawr, PA 19010

donofrio.services@gmail.com

www.mdonofrio.com

Michael D'Onofrio Historical Restoration is a family-owned preservation contracting firm with over fifty years of experience in traditional roof restoration and rehabilitation, custom metal fabrication and gutter repair, masonry cleaning and conservation, finish carpentry, hardscape construction, historical documentation, and building conditions assessments. Some of the materials we work with include but are not limited to slate, architectural shingles, terra cotta, cedar, tin, copper, and plaster. As per the stringent Secretary of the Interior's Standards for the Treatment of Historic Properties, we seek to conserve and to reuse historic materials and designs wherever feasible.

Monroe Coldren & Son Antiques

Tim Coldren

610-692-5651 (W) 610-310-0646 (C)

723 E. Virginia Avenue, West Chester, PA 19380

MonroeColdrenandSon@gmail.com

www.monroecoldren.com/

For over sixty-five years, Monroe Coldren and Son has been acquiring, restoring and supplying materials for some of our nation's finest homes. We stock a full line of architectural elements – mantels, doors, shutters, lighting and a full line of hearth equipment, furniture, candle sticks, brass and copper. Largest supplier of original 18th to 20th century hardware. Please see our ad on page 37

MR Roofing

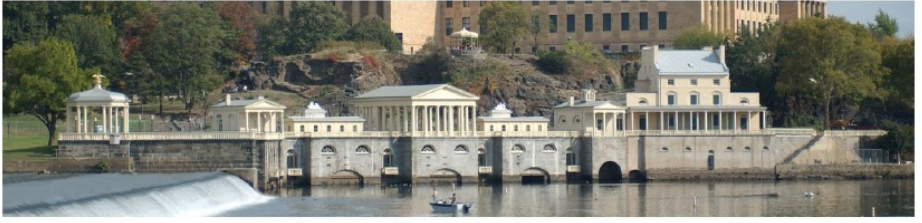
717-665-1752

1805 Mountain Road, Manheim, PA 17545

sales@mrroofing.biz

MR-Roofing.com

MR Roofing specializes in Cedar and Metal roofs for residential and commercial applications. Our expertise in historic preservation provides the quality craftsmanship needed to protect your historic property. We are a GAF Master Elite® certified roofing company and offer the highest levels of warranties for asphalt roofing, a 50-year manufacturer warranty, plus a 20-year workmanship warranty. Please see our ad on page 33



RESTORATION | ASSESSMENT | RENOVATION

www.mbtarchitects.com

215-985-1000

Top: Fairmount Water Works

Bottom: Woodford Mansion | Darby Free Library | Colonial PA Plantation

MBTA
MARK B. THOMPSON ASSOCIATES PC
ARCHITECTURE & PLANNING



MR-Roofing.com 717.665.1752

Your Roof. Our Reputation.

Award Winning Restoration - Cedar Shakes - Metal - Asphalt - Copper Detailing

Old House Guy Virtual Services

Ken Roginski, Preservation consultant

732-462-4623

info@oldhouseguy.com

www.OldHouseGuy.com

The OHG website contains a lot of information all homeowners with pre-1940 homes should know. The goal of the website is to provide an education. Old house owners must be completely knowledgeable before they make any changes to their house or hire anyone to do any work. Let the Buyer Beware. Key areas of education on my website are Curb Appeal, The Front Porch, Shutters, Vinyl vs Wood Siding. There are numerous articles to help understand your house and how you can bring back the architectural integrity. Historic paint colors and their placement are also discussed with hundreds of before and after photos. Zoom consultations are available and virtual house painting using a photo of your house. Please see ad on page 35

Orion General Contractors, Inc.

610-649-4545

100 Cricket Ave., Ardmore, PA 19003

info@oriongc.com

www.oriongc.com

Orion offers the highest level of both craftsmanship and communication to residential building and remodeling clients in the Philadelphia region. Our background in art, architecture and construction gives us a unique appreciation for many of the unique details that make older homes seem so comfortable and interesting.

Paul's Pointing, Inc.

Paul Steiner

610-633-2510

Kennett Square, Pa 19348

paul@paulspointing.com

www.paulspointing.com

Specializing in Brick & Stone Pointing, Historic Masonry Restoration, Chimney Repair, Masonry Cleaning (pressure washing and chemical cleaning), Caulking, Masonry Water Repellent Applicator, Stone Repair & Preservations

The Old House Guy

Caution - Old House Owners

Read this website before you do anything that could harm your house.

www.OldHouseGuy.com



Before

Rendering

Rendering

PENNSYLVANIA ART CONSERVATORY GALLERY OF ANTIQUE PAINTINGS & RESTORATION STUDIO

A Tradition in Quality



Before



After

~Museum quality restoration
of paintings and frames

~Exceptional antique paintings

~Custom gold leaf frames in period styles



www.PAConservatory.com

636 Lancaster Ave., Berwyn • (610) 644-4300

Pennsylvania Art Conservatory

610-644-4300

636 Lancaster Avenue, Berwyn, PA 19312

info@paconservatory.com

www.paconservatory.com

Serving the Main Line for over 35 years, The Pennsylvania Art Conservatory specializes in the restoration of antique paintings and frames. Our gallery features a large selection of fine quality paintings from the 19th & 20th centuries, in diverse styles. We offer hand-carved, gold leaf custom frames, along with the expertise to help you determine the best choices for your artwork. Please visit our website for more information.

Please see our ad on page 35

Period Architecture, Ltd.

Joseph Mackin

610-719-0101

53 Church Road Malvern, PA 19355

Mackin@periodarchitectureltd.com

www.periodarchitectureltd.com

Period Architecture, Ltd. is a custom residential firm pledged to architectural designs rooted in time-honored traditions that also deftly accommodate complex twenty-first century lifestyles. This dual passion and pursuit achieves transcendent, beautiful, and livable architecture that integrates family life, entertaining, and indoor to outdoor living.

Pinemar, Inc.

610-649-5075

106 Cricket Ave., Ardmore 19003

hello@pinemar.net

pinemar.net

Pinemar, Inc. is a company of builders and crafts-people working together to build extraordinary and beautiful homes. With a deeply collaborative approach to working with all project stakeholders, Pinemar is focused on building bespoke custom homes, complex and large-scale renovations, and providing ongoing home and estate maintenance services. We have a positive, supportive culture built on excellence in project delivery and client care, lifelong learning, and the pursuit of excellence. Based in Ardmore, PA, we work in Philadelphia and the surrounding counties, and Delaware.

Please see our ad on page 37

PINEMAR

BUILDING BEAUTIFUL HOMES

PINEMAR.NET



Monroe Coldren & Son Antiques

Supplier of 18th & 19th century original hardware, restoration materials and decorative arts

Please visit our showroom at

Monroe Coldren & Son Antiques
723 East Virginia Avenue
West Chester, Pennsylvania 19380

Or call for information:

(610) 692-5651
(610) 918-1722 facsimile

monroecoldrenandson@gmail.com



Historically Appropriate
Restorations
Brick, Stone & Plaster
484.548.0524

www.preservationworks.us



Preservation Works Ltd

Robert Wozniak

484-548-0524

120 N Locust St, Easton, PA 18042

Info@preservationworks.us

www.preservationworks.us

Specializing in historic masonry and plaster restoration using traditional lime based mortar, plaster or stucco to repoint stone and brick, repair or replace pebble dash stucco and other interior and exterior plaster finishes including the repair of ornamental gypsum plaster. Please see our ad on page 37

R&B Restoration Carpentry, LLC

Matthew Roberson, Partner

610-620-4656

PO Box 3527, West Chester, PA 19381

matthew@rb-rc.com

www.rb-rc.com

R&B specializes in the sympathetic preservation, repair and enhancement of historic buildings. Please see our ad on page 39

Reape, Jeffers & Associates, Real Estate Appraisers, Inc.

610-527-7540

16 N Bryn Mawr Avenue Box 70, Bryn Mawr, PA 19010

Order@reapejeffers.com or support@reapejeffers.com

www.reapejeffers.com

Providing Residential Appraisals & Consulting Services since 1985

We appraise residential 1 to 4 family properties for Intended Uses such as: Estates, Estate Planning, Divorce/Equitable Distribution, Pre/Post Nuptial, Pre-listing or Pre-Purchase, Appraisal Waivers, Tax Appeals, Asset Management, Relocation, Bankruptcy, Foreclosure, Mortgages, etc.

Covering Most of Chester, Delaware, Montgomery in PA & northern New Castle County in DE. Please see our ad on page 39

Rittenhouse Builders, Inc.

George Metzler

610-380-9570

1240 West Lincoln Highway, Coatesville, PA 19320

info@rittenhousebuilders.com

www.rittenhousebuilders.com

Rittenhouse Builders is comprised of people with diverse backgrounds and varied skills. Yet the common Rittenhouse DNA shared by all is our singular

ESTD



2018

RESTORATION CARPENTRY INC



WEST CHESTER
PENNA

484-716-2343 OR 610-620-4656

WWW.RB-RC.COM



DONALD J. REAPE, MAI

REAPE, JEFFERS & ASSOCIATES REAL ESTATE APPRAISERS, INC.

Bryn Mawr, PA 19010
PHONE: 610 527 7540 Ext 103

order@reapejeffers.com
www.reapejeffers.com



LOUISE M. JEFFERS, SRA, AI-RRS



SERVING DELAWARE COUNTY FOR SINGLE FAMILY TO 4 FAMILY HOUSING
THROUGHOUT THE LAST 40 YEARS

focus on craftsmanship and excellence. As a company we accept nothing less, and as individuals our team is never satisfied with anything less.

Please see our ad on page 41

Rose Valley Restorations

John Hutchinson

610-738-8323

219 Mechanics Alley, West Chester, PA 19382

john@rosevalleyrestorations.com

www.rosevalleyrestorations.com

Rose Valley Restoration's principal focus is restoration and conservation of antique, fine furniture and decorative arts including antique pool & gaming tables and architectural elements.

Serves Main Line, Rose Valley, Media, Swarthmore areas and Cape May County

sbk + partners, LLC

Suzanna Barucco

610-357-9763

Ardmore, PA 19003

suzannabarucco@gmail.com

www.sbkpartners.net

sbk + partners, LLC is a historic preservation consulting firm providing professional services for the assessment, preservation, restoration, rehabilitation and adaptive re-use of historic buildings, sites and landscapes.

Consulting services cover a broad range, from historical research to construction documents and construction observation. sbk offers the personal attention of a small firm with the resources of a large firm. Long-standing relationships with professionals in related disciplines enable us to provide a comprehensive team approach when required. Professional partners include architects and landscape architects, structural, mechanical, electrical and plumbing engineers, materials and finishes conservators and archaeologists.

sbk + partners, LLC is a 100% woman-owned business.

Please see our ad on page 41

Stable Hollow Construction

717-665-0580

1805 Mountain Road, Manheim, PA 17545

sales@stablehollow.net

StableHollowConstruction.com

At Stable Hollow Construction, our passion is old barns. If you're looking for a historically accurate restoration, an adaptive reuse renovation or historic new




RITTENHOUSE
BUILDERS
 MEASURED & TRUE



sbk + partners, LLC
 historic preservation consulting

Condition Assessments ▪ Preservation Plans ▪ Register Nominations ▪ Restoration Planning,
 Design and Construction Observation ▪ Historic Rehabilitation Tax Credit Consulting

▪ SuzannaBarucco@Gmail.com

Haas College Hall, Muhlenberg College, Dome Gutter Replacement

▪ www.sbkpartners.net

construction, we're here to help. We are a full-service contractor with dedicated crews of timber framers, carpenters, stonemasons and roofing experts. We look forward to bringing our expertise and quality craftsmanship to projects of all sizes.

Please see our ad on page 43

Streamlight Design LLC

Courtney Sarge

484-824-8757

2300 Ridge Road, Elverson PA 19520

courtneys@streamlightdesign.com

www.streamlightdesign.com

Architectural lighting design for commercial, municipal and residential projects including presentations to communicate lighting concepts, the design of lighting and lighting control systems, specifications for lighting fixtures, construction administration and site visits to aim the lighting as needed. Streamlight Design has extensive experience with historic preservation projects and works with the entire design team to carefully integrate the lighting while using it to accentuate the beauty of these notable buildings.

Traditional Building

<https://www.traditionalbuilding.com/buying-guides>

Traditional Building's Buying Guides showcase services and period-inspired products for the traditional commercial and residential design and construction market. Included in the buying guides are resources for salvaged materials and antiques, streetscapes/landscape specialties, and many other hard-to-find services for the traditional commercial and residential building professional.

Voith & Mactavish Architects

John Cluver

215-545-4544

2401 Walnut Street, 6th Floor, Philadelphia, PA 19103

info@vma1.com

voithandmactavish.com

Founded in 1988, VMA is a woman-owned design firm offering architecture, planning, interiors, and historic preservation services to institutional and residential clients throughout the region. Visit our website for details or contact us directly.

Please see our ad on page 43



StableHollowConstruction.com

717.665.0580

Building the Future by Preserving the Past.

Award Winning Restoration - Timber Framing - Construction - Masonry - Roofing



VMA
VOITH & MACTAVISH ARCHITECTS



VSBA Architects & Planners

Jeremy Tenenbaum, Director of Marketing and Graphics

215-487-0400

116 Shurs Lane, 3rd Floor, Philadelphia, PA 19127

info@vsba.com

www.vsba.com

Comprehensive planning and architectural design services, including renovation and expansion of historic structures.

Please see our ad on page 44

ACADEMICCULTURALCIVICHEALTHCARERENOVATI
ONPLANNINGFURNISHINGSGRAPHICSETCETERAA
CADEMICCULTURALCIVICHEALTHCARERENOVATIO
NPLANNINGFURNISHINGSGRAPHICSETCETERAAC
DEMICCULTURALCIVICHEALTHCARERENOVATIONP
LANNINGFURNISHINGSGRAPHICSETCETERAACADE
MICCULTURALCIVICHEALTHCARERENOVATIONPLA
NNINGFURNISHINGSGRAPHICSETCETERA

VSBA

ARCHITECTS & PLANNERS

116 SHURS LANE PHILADELPHIA PA 19127 (215) 487-0400
FACEBOOK INSTAGRAM LINKEDIN TWITTER VSBA.COM

USEFUL LINKS

Delaware County Heritage Commission

Delcopa.gov/heritage

Delaware County Planning Department

Historic Preservation: <http://tiny.cc/HistPres>

Historic Preservation Plan: <http://tiny.cc/HPPlan>

Maintaining Your Historic Home: A Practical Guide for Homeowners:
<https://bit.ly/MaintainHistoric>

National Park Service

National Register: www.nps.gov/subjects/nationalregister/index.htm

Technical Preservation Services: www.nps.gov/orgs/1739/index.htm

Advisory Council on Historic Preservation

www.achp.gov

Preservation Alliance for Greater Philadelphia

www.preservationalliance.com

National Trust for Historic Preservation

savingplaces.org

Preservation Pennsylvania

www.preservationpa.org

Pennsylvania Historical and Museum Commission

www.phmc.pa.gov

Delaware County Historical Society

www.padelcohistory.org/

Delaware County Historic Preservation Network (DCHPN)

delcohpn.wixsite.com/dchpn (links, guides, events, eblast, publications)

www.facebook.com/groups/dchpn/

delawarecountyhistory.com Delaware County History website