

2025



DCHD

DELAWARE COUNTY HEALTH DEPARTMENT

Annual Report

(484) 276-2100

DelcoWellness@co.delaware.pa.us

Delcopa.gov/health

About Us

The Delaware County Health Department consists of the Administration Division, Environmental Health Division, Personal Health Division, Population Health Division, and Epidemiology. Each division is staffed by hard-working, knowledgeable professionals dedicated to serving Delaware County residents.



Building a Healthier Delco



Delaware County Wellness Center at Yeadon

125 Chester Avenue, Yeadon, PA 19050
Monday to Friday, 8:30 AM to 4:30 PM

Administrative Division

1510 Chester Pike Suite 700
Eddystone, PA 19022
Monday to Friday, 8:30 AM to 4:30 PM

Delaware County Wellness Center at Chester

151 W. 5th St, Chester, PA 19013
Monday to Friday, 8:30 AM to 4:30 PM

Environmental Division

LICENSE, REGISTRATION, AND PERMITTING
(as of 2/1/26)
1400 N Providence Rd, Suite 212 Media PA 19063
Monday to Friday, 8:30 AM to 4:30 PM

TABLE OF CONTENTS

4	Our Vision & Mission
5	Board of Health
6	Leadership Team
7	What is Public Health?
8	Building Healthy Families
9	DCHD in Delaware County
10	Epidemiology and Disease Surveillance
11	Delco Revive
12	Environmental Health
13	STI Prevention, Testing & Treatment
14	Infrastructure and Partnerships
15	Crozer Response
16	Public Health Kiosks
17	HRSA Health Equity Resource Improvement Accomplishments
18	Cold Storage Program
19	Mobile Health Community Engagement Campaign
20	Lead Free 1-2-3
21	FY24-25 Budget Breakdown
22	Impact

Our Vision

To ensure **health promotion**,
disease prevention, and
health protection for all
Delaware County residents.



Our Mission

To prevent injury, illness, disease, and premature death through the promotion of healthy behaviors, protection of the environment, and prevention of the spread of disease and illness.

1

PREVENT

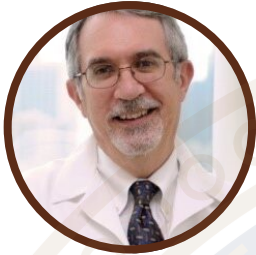
2

PROMOTE

3

PROTECT

Delaware County BOARD OF HEALTH



Dr. Patrick Brennan

Dr. P.J. Brennan is the Chief Medical Officer of the University of Pennsylvania Health System, an infectious diseases physician, and creator of Penn's Blueprint for Quality and Safety, which significantly reduced hospital-acquired infections, mortality, and readmissions. He led Penn Medicine's COVID-19 response, serves on Delaware County's Board of Health, and has advised national health agencies including HHS and the CDC.



Dr. Lily Higgins

Dr. Lily Higgins is a health care executive with over 30 years of clinical and managerial experience. A visionary, a complex problems solver and a relationship builder across multiple constituents. An innovator with proven track record of successful programs that meet the triple aim with attention to social determinants of health and health equity.



Rosemarie Halt

Rosemarie is a registered pharmacist with an MPH and over 35 years of experience in healthcare, specializing in health policy and public health; she founded Fawn Hill Health Policy Consulting and previously led Delaware County's COVID response while helping establish the county's health department. She now serves the Delaware County Board of Health and has held multiple policy leadership roles, including Interim Health Policy Director at Children First and Senior Director of Policy at Maternity Care Coalition.



Dr. Annemarie Hirsch

Dr. Annemarie Hirsch is an epidemiologist and Professor at Geisinger and serves on the Delaware County Board of Health. He directs the Geisinger-Johns Hopkins Center for Community Environment and Health, using electronic health record data to study social and environmental determinants of chronic diseases like diabetes and obesity, with funding from NIH, CDC, the Pennsylvania Department of Health, and foundation grants.



Oni Richards

Oni Richards is the Executive Director of the African Family Health Organization (AFAHO), where she leads health and human service programs for African and Caribbean immigrants and has expanded community-based services and youth educational initiatives. She has over eight years of public health leadership experience, has received multiple community service awards, and previously organized health and justice advocacy work in Africa.

Leadership Team

Message from the Director

As we reflect on 2025, the Delaware County Health Department is proud to share this Annual Report as a testament to our unwavering commitment to advancing the health and well-being of every resident across our county. Over the past year, our team deepened data-driven public health practice, strengthened community partnerships, and sustained critical services despite ongoing regional challenges. Guided by the priorities articulated in our Community Health Improvement Plan – promoting whole-person care, improving maternal and child health, and preventing chronic disease – we have expanded outreach, modernized infrastructure, and enhanced access to essential clinical and preventive services for our neighbors. This report highlights measurable impact, emerging opportunities, and our collective progress toward health equity. We extend our gratitude to the community organizations, local leaders, and residents whose collaboration and trust make this work possible, and we look ahead with determination to build a healthier, more resilient Delaware County in the years to come.

Warm regards,
Lora Siegmann Werner, MPH
Director
Delaware County Health Department



Stephanie Reese, MSN, MBA, RN
Deputy Director



Chris Walmsley
CFO/Deputy Director



Cebele Rodriguez
Administrator of Operations



Gifty Key, EdD, MS
Administrator of Population Health



Marie Carbonara, RN
Administrator of Environmental Health



Megan Sheikh, CSN, BSN, RN
Administrator of Personal Health



Victor Rullan, DMD, MPH, MS
Administrator of Epidemiology



What is Public Health?

Public health is the coordinated practice of preventing disease, protecting community health, and promoting conditions that support well-being across populations. It extends beyond clinical care to address environmental, social, and systemic factors that influence outcomes, ensuring all residents have equitable opportunities to achieve and maintain good health.

Health Promotion and Education

Empowering residents with information, resources, and programs that support informed decisions and healthier lifestyles.

Disease Prevention and Control

Monitoring, detecting, and reducing the spread of illness through surveillance, vaccination, and evidence-based intervention.

Environmental Health

Safeguarding air, water, housing, and community environments to prevent hazards and protect public well-being.

Health Policy and Advocacy

Advancing policies and systems that strengthen public health infrastructure and improve access to essential services.

Health Equity

Reducing disparities and ensuring all residents regardless of background or location have fair opportunities for optimal health.

Emergency Preparedness and Response

Planning for, coordinating, and responding to public health emergencies to protect lives and maintain community resilience.



Building Healthy Families

Supporting Healthy Families and Mothers in 2025



Delaware County, like much of the nation, faces persistent *maternal and infant health challenges*, including disparities in outcomes. In 2025, DCHD *redoubled its efforts to ensure every baby and every mother has a healthy start*



Key Initiatives

✓ Doula Services & Training

- Provided free doula support to **40+ mothers**
- **8 new doulas** trained
- **Impact: improved birth experiences** and potentially **better birth outcomes** (mention reduced stress, more support).

✓ Maternal Wellness & Education

- Community Workshops
 - Mental Health and **Parenting Support**
 - **Mommy Meet Up** support group
 - *Chester Maternal Wellness Day*

✓ Child Health Interventions

- Childhood **immunizations** via clinics
- **Teen STI clinics**
- VFC Program

✓ Coalitions & Partnerships

- **Maternal and Child Health Committee** and **CHIP workgroup** involving local hospitals, nonprofits, and universities to *align resources*.
- Developed centralized intake system for maternal/child resources to **simplify how families get help**



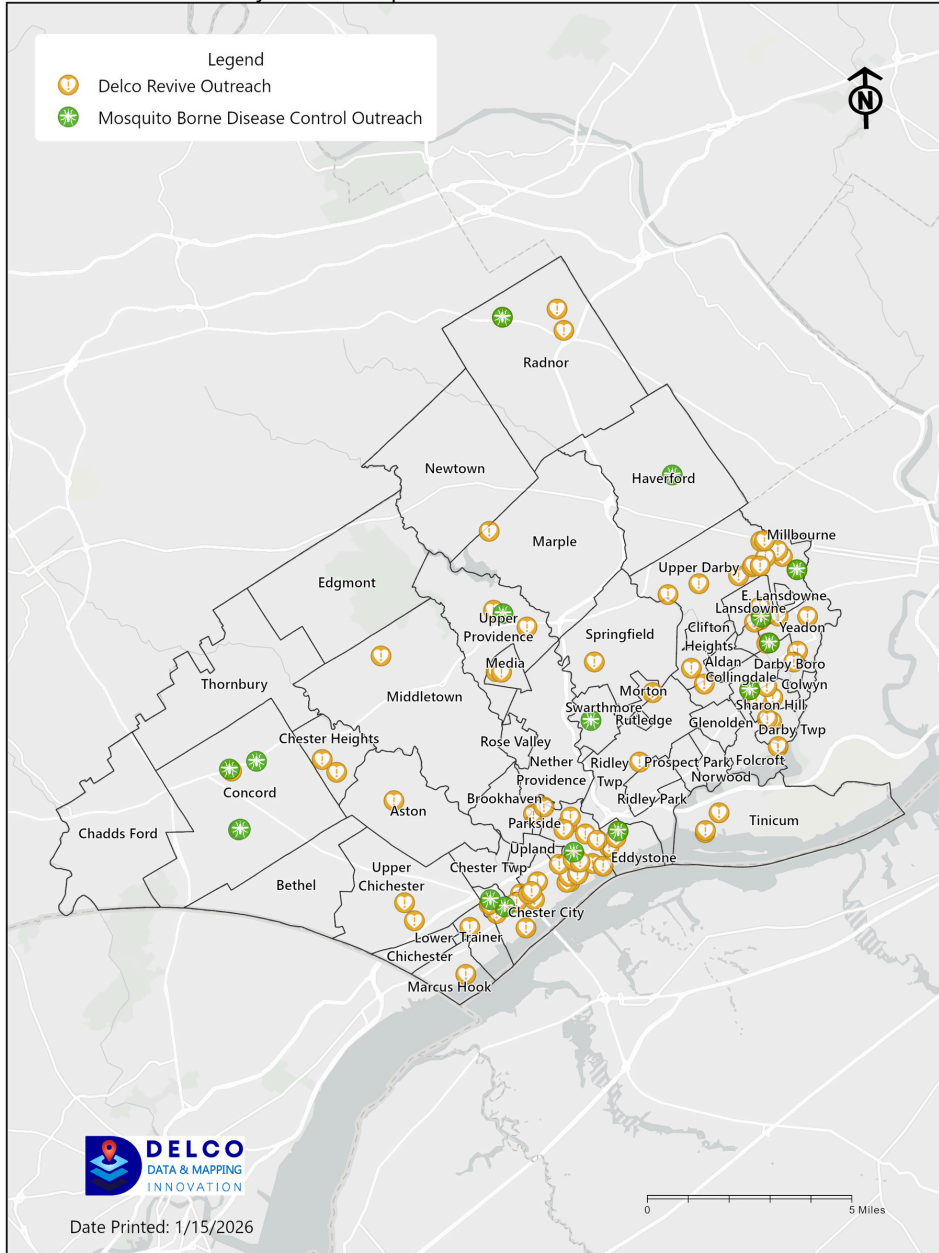


DCHD in Delaware County

Promoting Health and Education across the County in 2025



2025 Delaware County Health Department Health Education and Outreach Events



Back-To-School !



In August 2025, the Delaware County Health Department hosted its inaugural Chester and second annual Yeadon Back-to-School events, delivering meaningful support to families across the county. Across both events, DCHD facilitated more than 275 vaccinations, 87 dental screenings, 65 vision screenings, and 30 haircuts, while also distributing school supplies and connecting families to essential resources. The Chester event was held in collaboration with the City of Chester, Nemours, and ChesPenn, while the Yeadon event was supported by more than 30 DCHD staff members and partners including EagleEye, KidSmiles, Delco Libraries, Wawa, Acme, YMCA, and Franklin Mint. Together, these events reflected DCHD's strong commitment to community-centered service, with partners and participants consistently praising the efforts; a colleague from Pennie shared, "Loved every moment of the day and it is so very evident how dedicated to the local community the DCHD is."





Epidemiology & Disease Surveillance

Tackling Threats. Informing Action. Protecting Delaware County.

Behind every public health response is data. In 2025, DCHD's Epidemiology Team served as the county's early-warning system – detecting emerging threats, monitoring disease trends, and guiding prevention strategies that kept residents safe. Through real-time surveillance, outbreak investigations, and advanced data analysis, the team ensured leadership and partners had timely, accurate information to act decisively.

700+ Data Requests completed

50+ Epidemiological reports produced



Surveillance & Monitoring in Action

DCHD epidemiologists conducted continuous monitoring of communicable and reportable diseases, including respiratory illness, sexually transmitted infections, and vector-borne disease. Wastewater surveillance, emergency department utilization data, and laboratory reporting were used together to identify trends early and respond effectively.

2025 Key Delco Surveillance Findings

- **Zero** measles cases identified among Delaware County residents
- Chlamydia **cases decreased by 350+**, reflecting prevention and testing efforts
- Pertussis **cases declined by over 120**, reinforcing the importance of immunization outreach
- **57** positive West Nile Virus mosquito pooled samples (Brookhaven, Lansdowne, Haverford, Radnor)

Epi Response Highlights

- **Managed and closed** multiple [COVID-19 outbreaks](#) in long-term care facilities
- **Investigated** 60+ [animal bite exposures](#), including high-risk bat exposures
- Conducted **surveillance and response** for [mpox](#), including wastewater detections
- Supported **infection control responses** for [Legionella](#), [Cryptosporidium](#), and [resistant organisms](#)
- Analyzed [heart disease age-adjusted mortality](#) by municipality
- Completed 1 report on [vaping](#) in Delco and 2 reports on [air pollution](#) for the City of Chester Health Commissioner



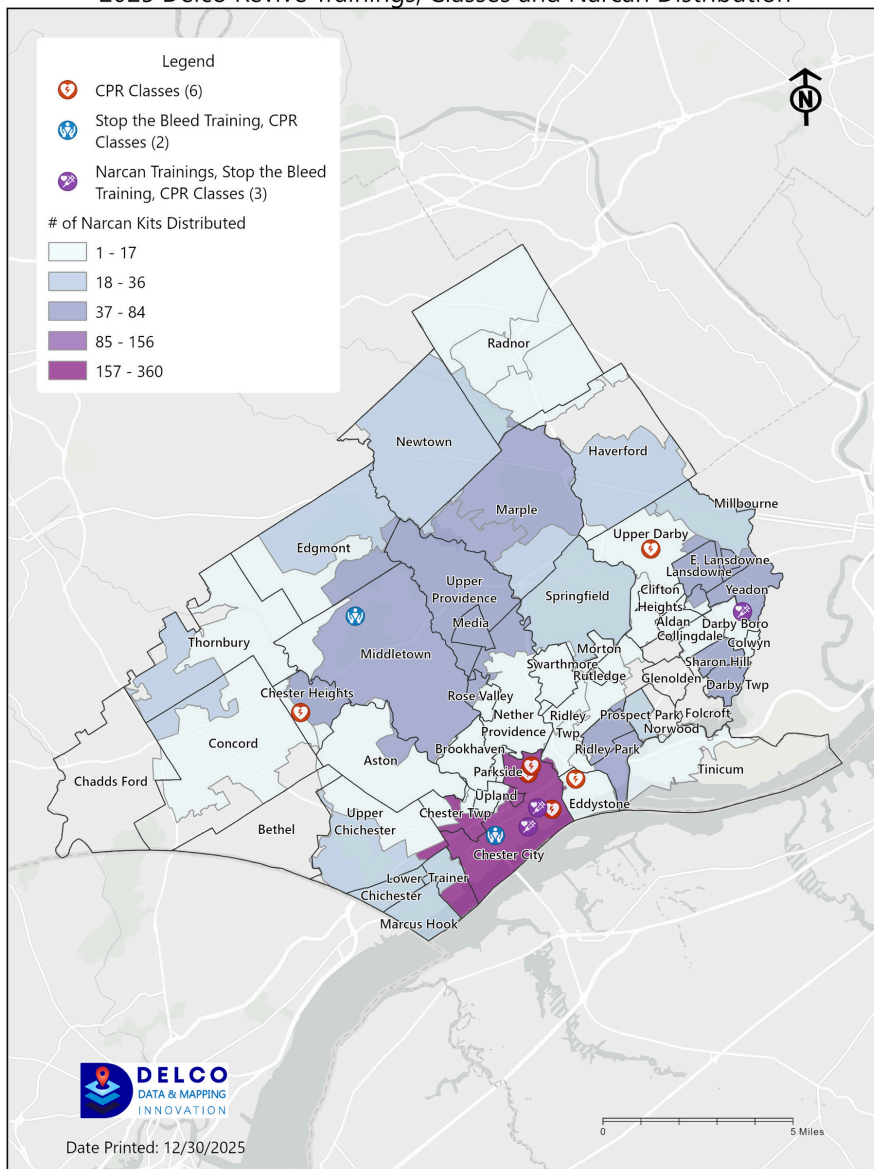
Delco Revive

Saving Lives in Delaware County

Delco Revive is Delaware County's harm-reduction program funded through Opioid Settlement dollars. It focuses on overdose prevention, community training, and distribution of life-saving supplies throughout the county. The goal is straightforward: reduce preventable deaths, educate the public, and build community capacity to respond to overdoses and other emergencies.



2025 Delco Revive Trainings, Classes and Narcan Distribution



Overdose Prevention & Harm Reduction

8000+ Narcan kits distributed

4500+ Fentanyl Test Strips

2500+ Xylazine Test Strips

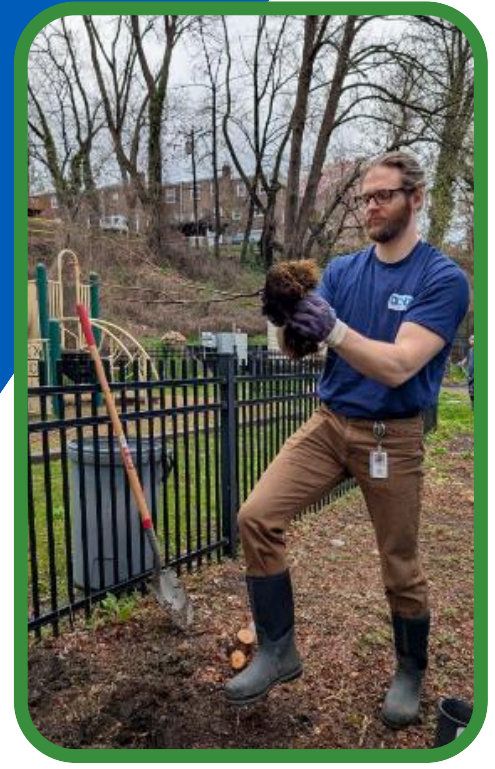
Community Training & Capacity Building

300+ CPR Certifications

30+ CPR Training Classes

50+ Trained in Stop-The-Bleed

50+ Trained in Narcan Administration



Environmental Health

Protecting the Places where Delaware County Lives, Works, and Gathers

Environmental Health is where public health meets daily life. In 2025, DCHD's Environmental Health team safeguarded residents by ensuring food safety, monitoring environmental hazards, responding to complaints, and preventing vector-borne disease. Through inspections, surveillance, and rapid response, the team reduced risks before they became public health emergencies.



Protecting Delaware County Residents



Inspections

DCHD conducted routine and complaint-based inspections across food establishments, pools, and institutional facilities to ensure compliance with health codes and protect residents from preventable illness.

- **5,929 total inspections** conducted covering **2,469 facilities**
- **391 complaint investigations** completed
- **251 plan reviews** completed for new or modified food operations

Disease Surveillance

13,900+

Mosquito samples analyzed

450+

Lyme disease cases monitored
**Delco's Lyme disease incidence is lower than Chester, Montgomery, and Bucks Counties*

16

Anaplasmosis cases tracked and investigated

3

Human West Nile virus cases detected

Regulatory Enforcement

Environmental Health enforced state and local regulations to protect residents from unsafe products and environmental violations.

- Partnered with USDA and PA Department of Agriculture to **investigate non-compliant food suppliers**
- Citations issued and **unsafe products removed** from circulation
- **Follow-up inspections** conducted to ensure continued compliance

Environmental Hazard Response

Environmental Health staff coordinated with state partners to protect vulnerable children and families.

- **166 recall audit checks** completed within 3 days during an infant formula recall

12



GET TESTED!

STI Prevention, Testing & Treatment

Expanding Access. Reducing Risk. Protecting Community Health.

Sexually transmitted infections remain a significant public health concern, particularly when testing and treatment are delayed or inaccessible. In 2025, DCHD expanded STI services beyond traditional clinic settings – bringing testing, treatment, and prevention directly to high-need populations through partnerships, outreach, and integrated public health services.

By the Numbers

800+ STI tests conducted at George W. Hill Correctional Facility

200+ Patients served in DCHD clinics

County Stats

350+ less Chlamydia cases than last year

100+ less Gonorrhea cases than last year



Breaking Barriers to Testing and Treatment

Expanded Access to Testing

DCHD prioritized low-barrier testing by embedding STI services in community and institutional settings, reaching residents who may not otherwise access care.

@George W. Hill Correctional Facility

- **800+ STI tests conducted**
- Reduced county costs by shifting testing from external providers
- Improved **continuity of care for incarcerated individuals**

Campus-Based Testing

- New partnership launched with Widener University
- Expanded access to on-campus STI testing for students and adults

Monitoring STI Trends

Epidemiology and STI program staff worked together to monitor countywide trends, inform prevention strategies, and guide outreach priorities.

- **Chlamydia cases decreased by 350+** compared to the prior year
- **Gonorrhea cases declined by nearly 100**

These trends reflect the importance of early detection, timely treatment, and sustained prevention efforts.

Youth & Adolescent Sexual Health

DCHD continued to prioritize adolescent health by offering confidential, youth-friendly STI services.

- Teen STI clinics offered in accessible community settings
- Education and screening aligned with prevention and early treatment goals
- Services designed to reduce stigma and promote long-term sexual health

Clinical Services & Treatment

STI testing and treatment services were provided through DCHD clinics in Chester and Yeadon, offering confidential care regardless of insurance status.

- **200+ Clinic patients served** through DCHD clinics
- **65+ patients treated for STIs in August alone**
- Integrated testing for chlamydia, gonorrhea, syphilis, HIV, and hepatitis



Infrastructure and Partnerships

*Strengthening Our Foundations:
Workforce, Infrastructure & Community Partnerships*



Behind every clinic and program, there's a foundation that makes it possible. In 2025, DCHD focused on *strengthening its core* – investing in **people, technology, and partnerships** to ensure a *healthier tomorrow for Delaware County*

Community Health Improvement Plan (CHIP)

The Community Health Improvement Plan (CHIP) is Delaware County's strategic framework for addressing the most significant health priorities affecting residents. Developed through data analysis, stakeholder input, and community engagement, the CHIP identifies key focus areas, sets measurable objectives, and guides coordinated action across public health, healthcare, government, and community partners. It is designed to align programs, resources, and policy decisions with long-term goals that improve population health, reduce disparities, and strengthen the conditions that shape well-being. The CHIP serves as both a roadmap and an accountability tool, ensuring progress is monitored and updated as community needs evolve.

✓ **Maternal, Parental, and Infant Health**

- Improve maternal, parental, and infant health outcomes through improved access to community and medical services.
- Decrease opioid misuse during pregnancy.
- Prevent infant death.



✓ **Prevent Chronic Disease**

Increase the proportion of Delaware County residents living healthy lifestyles through increasing awareness, availability, and accessibility of:

- physical activity opportunities and
- affordable, nutritious food



✓ **Whole Person Care**

- Improve mental health outcomes via improved access and awareness
- Reduce fatal and nonfatal overdoses



Crozer Response

DCHD Response to Prospect Medical Bankruptcy

A victim of private equity, Crozer Health System, the largest healthcare system in Delaware County, collapsed in May 2025. Under the leadership of the Department of Emergency Services and alongside other county departments, DCHD played a central role in the response to this disaster, working to protect continuity of care, share critical data, and keep residents and partners informed during a period of significant disruption. DCHD's activities included:

- Produced an **impact assessment** and providing **ongoing epidemiological surveillance**
- **Facilitated communication and problem-solving** across the regional healthcare system, including **coordination of patient transfers**
- Maintained the County's public website with updates on the Prospect Medical Holdings bankruptcy and **information for the community**
- **Answered hundreds of community inquiries** through its [Wellness Line](#) and hosted in-person "Navigating Our Healthcare System" events
- Supported **workforce re-employment efforts for Crozer employees**, including providing [CPR training](#) to help staff obtain new positions
- Through [partnerships with County Council, Together for Chester, the County's GIS team, and regional healthcare leaders](#), **DCHD expanded access to healthcare resources, supported emergency EMS coverage, launched the Delaware County Health Resources Locator**, and helped advance *longer-term solutions* to strengthen healthcare sustainability across the county



Navigating Our Healthcare Systems for Seniors

In the summer and fall, DCHD implemented a multi-site outreach series titled Navigating Our Healthcare System for Seniors. The program brought DCHD staff directly into nine senior centers across Delaware County—including Chester, Sharon Hill, Media, Folsom, and Upper Darby—where residents received individualized guidance on securing medical records, managing online portals, and understanding follow-up care options. The initiative focused on meeting residents where they are, with in-person support rather than expecting seniors to navigate systems alone.

Voices from the Field

"In a digital world where much of the healthcare system has moved online, many older adults struggle to keep up," said Delaware County Health Department Director Lora Werner. "DCHD's goal was to break through the barrier with the assistance of our compassionate and dedicated staff." As one resident said in her voice message *"Thank you so much. I had a good time with your team. They are the best people... very cooperative and friendly. They did all the paperwork. I really appreciate all your help."*

By the Numbers

200+	Seniors assisted
120+	Blood Pressure Screenings
100+	Medical Records Requests Submitted
10+	Outreach Events



Public Health Kiosks

Expanding Access to Harm Reduction and Public Health Resources

Prevention in Action

DCHD’s “Test and Go” Public Health Kiosks are an initiative to expand access to harm reduction and public health resources for Delaware County residents.

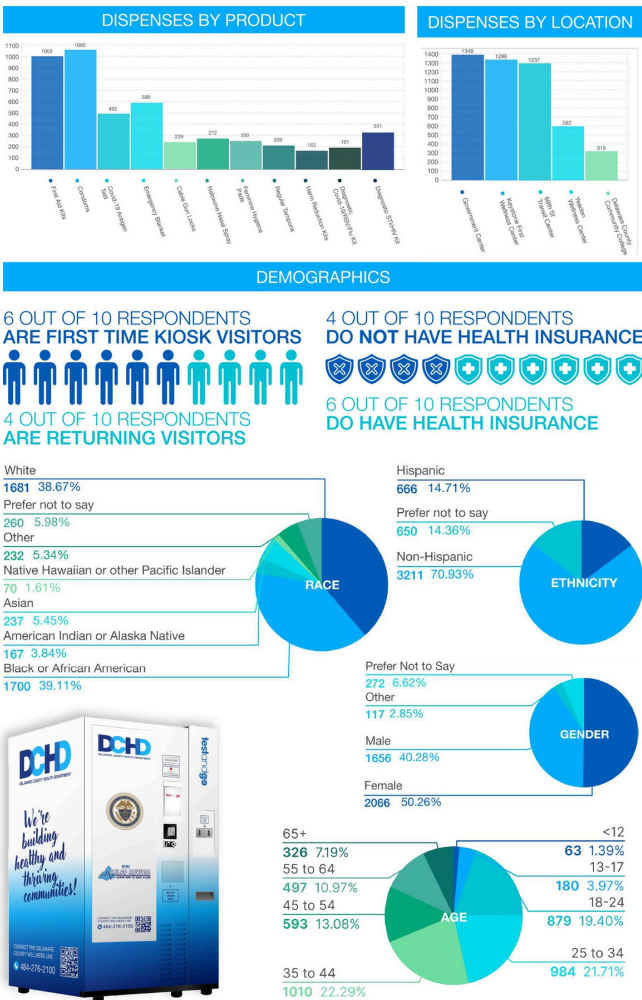
These kiosks include Narcan, gun locks, test strips, condoms, tampons/pads, first aid kits, STI/HIV tests, emergency mylar blankets, and COVID-19, flu A/B, RSV and COVID-19 rapid antigen tests.

These kiosks are fully funded by opioid settlement funding and DCHD grant funding directed to these kinds of initiatives.

These self-service kiosks are in five high-traffic public locations in the county. Residents can access these resources with no appointments, fees, or ID, reducing barriers related to transportation, insurance, and scheduling while prioritizing convenience and privacy.

Year in Review

How the DCHD Kiosks are Meeting Health Needs



LAUNCH DATE
9/16/24

ACTIVE
12 Months

NEW KIOSKS
+2
on 4/14/25

TOTAL DISPENSES
4,799

AVERAGE WEEKLY DISPENSES
82

EMERGENCY NALOXONE DISPENSES
43

AFTER HOURS DISPENSE RATE
37%
1,785 Dispenses

AVERAGE DISPENSE TIME
1pm

TOP ZIPCODES

Zip Code	Dispenses
19013	1014
19063	353
19082	309
19023	277
19050	185

testandgo

HRSA Health Equity Resource Improvement Accomplishments

Federal Investment to Build a Modern Health Department

In August 2023, the Delaware County Health Department (DCHD) was awarded the Health Equity Resource Improvement Initiative, a \$1.75 million congressionally directed award from the Health Resources and Services Administration (HRSA) of the U.S. Department of Health and Human Services. The grant was sponsored by U.S. Representative Mary Gay Scanlon and concluded at the end of 2025.

At the time of award, DCHD was just over one year old. This investment provided critical early momentum, enabling the department to build core infrastructure and expand equitable public health services across communities with the greatest need.



Turning *Investment* into Impact



Community Partnerships

Making a Change Group:

after-school mentoring for 48 youth (ages 8–14), a budget-friendly healthy eating program for families, and a six-week summer youth program

Emergency food support:

through the purchase and installation of cold-storage equipment at 8 food pantries countywide

Once Upon a Premie:

accredited maternal and infant health e-learning for providers in high-risk communities, resulting in 284 CEUs earned across five providers and 90–100% satisfaction ratings

Wrap-around support:

Partnership with Family & Community Services of Delaware County for highly vulnerable families facing complex public health challenges

Information Technology

Electronic Medical Records (EMR) system to support clinical operations

Inspection Management System to strengthen regulatory and environmental health work

Project Management System to track department and individual goals and share select initiatives through public dashboards

Timekeeping and attendance software to ensure accurate tracking of staff time, benefits, and public funds

Enhanced **safety and security infrastructure** across DCHD facilities to protect staff, clients, and County property



KYW NEWSRADIO 3 NEWS 10 LOCAL

Delaware County Health Department
offering cold storage equipment to eligible
food pantries

Cold Storage Program

Strengthening Food Access and Reducing Food Insecurity

The Delaware County Health Department (DCHD) launched the Cold Storage Program to help alleviate food insecurity and improve access to fresh, nutritious food across Delaware County. Through this initiative, DCHD supports local nonprofit organizations in purchasing cold storage equipment for food pantries, ensuring perishable foods can be stored safely and distributed to residents who need them most.



Expanding Access to Fresh, Healthy Food



Cold Storage Equipment Award Opportunity!



In its effort to combat food insecurity, the Delaware County Health Department is partnering with local organizations to provide cold storage equipment for food pantries in Delaware County.

To be Considered

Your organization must be able to identify the following criteria.

- Vulnerability
- Community Engagement
- Infrastructure
- Sustainability
- Cost
- Tax-exempt Status

For more
information visit
Delcopa.gov/health



Cold storage is a critical component of food security. Delaware County food pantries play a pivotal role in reducing barriers to healthy food, but many lack the infrastructure needed to safely store fresh produce, dairy, and proteins.

By supporting **cold storage capacity**, DCHD helps:

- **Prevent** food spoilage
- **Reduce** food waste
- Extend the availability of **fresh foods**
- **Lower the risk of** foodborne illness



DCHD purchased and installed cold storage equipment at **8 food pantries** across Delaware County

The Cold Storage Program reflects DCHD's commitment to addressing social determinants of health by investing in practical infrastructure that improves nutrition access, strengthens community organizations, and supports healthier outcomes for residents countywide.



Mobile Health Community Engagement Campaign

Listening First: Building a Community-Informed Mobile Health Program

From March–July 2025, the Delaware County Health Department (DCHD) conducted a countywide Mobile Health Community Engagement Campaign, also known as the Listening Campaign, to inform the design and launch of DCHD's Mobile Health Unit (MHU). The campaign centered community voice, strengthened partnerships, and gathered actionable input to ensure future mobile health services are accessible, trusted, and responsive to resident needs



What We Heard & What We're Building



The Listening Campaign

was designed to

Gather **community and stakeholder input** on mobile health offerings

Raise awareness of DCHD's current and planned mobile health services

Strengthen **relationships** with residents, service providers, and local partners

Key Outcomes

Community feedback directly informed

- Preferred **mobile health services**
- Desired **service enhancements**
- **Access** considerations and participation barriers
- Effective **communications and outreach** approaches



Coming Soon!

Partnership Development

- 40** Partners Committed to Hosting the Mobile Health Unit at their Sites or Events
- 33** Partners committed to Outreach or Referrals
- 26** General or other Partnership Commitments
- 16** Partners Offering a Supporting Service or Resource

Campaign Reach

- 220+** Total Participants
- 90+** Distinct Stakeholder Groups
- 90+** Community Surveys Completed
- 45** Listening Sessions Conducted
- 7** Community Events



Lead Free 1-2-3

Defending Delaware County against Lead Exposure

The Lead Free 1-2-3 Campaign was a countywide public awareness and prevention initiative launched in Summer 2025 to educate families about lead exposure risks and promote early prevention, testing, and remediation. The campaign emphasized that lead poisoning is preventable and remains a current public health concern affecting hundreds of children in Delaware County each year



Lead Prevention Starts at Home



The Lead Free 1-2-3 Campaign

centered on three core messages

Lead poisoning doesn't have to be scary – with the right information, families can prevent exposure

Lead is not a problem of the past – hundreds of Delaware County children are affected annually

Prevention, testing, and education matter – especially for families with young children

Community Partnerships

- 38 Daycare and Pre-K Facilities
- 25 Elementary Schools & Early Intervention Locations
- 24 Municipalities
- 20 Pediatricians & Birthing Facilities
- 7 Libraries & YMCAs
- 6 Legislators
- 5 Maternal, Parental, and Infant Health (CHIP) Partners
- 5 Hardware Stores & Grocery Stores
- 3 Faith-Based Organizations

Digital Campaign

-  **807K**
Impressions
-  **7.8K**
Clicks
-  **3.4K**
Sessions

IS LEAD LURKING IN YOUR HOME?

Young children are extremely vulnerable to lead poisoning. One small speck can elevate a child's blood-lead level. This can cause life long health problems, such as:

- Developmental delays
- Hearing and speech problems
- Serious illness and even death

Get lead-free in 1-2-3.

Preventing lead poisoning is as easy as following three simple steps.

1
Get tested.
Get your child tested at their 1- and 2-year-old wellness visits.

2
Get inspected.
Have your home inspected, especially if it was built before 1978.

3
Stay connected.
Go to LeadFree123.org to get all available information on lead poisoning and learn what to do if lead is detected.

Lead poisoning is not a thing of the past. Hundreds of children in Delco are affected each year, and thousands in PA. Now is the time to learn more about prevention, diagnosis and safety at LeadFree123.org.



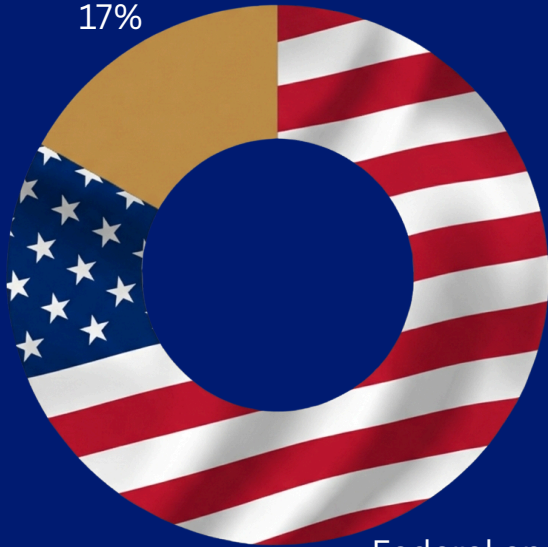
Childhood Lead Poisoning Prevention

- 400+** Children tested for Lead Poisoning at ChesPenn clinics
- 120+** Pediatrics cases of Elevated Blood Lead managed
- 8** Lead Care analyzers distributed to healthcare providers



FY24-25 BUDGET BREAKDOWN

County Contribution
17%



Federal and
State Subsidy
83%

How the Budget is Funded

\$11,415,417

Total FY24-25 Budget

\$9,469,501

Federal and State Subsidy

\$1,945,917

County Contribution

(Fully funded by Federal American Rescue Plan Act, ARPA)

How the Budget is Spent

\$2,906,677

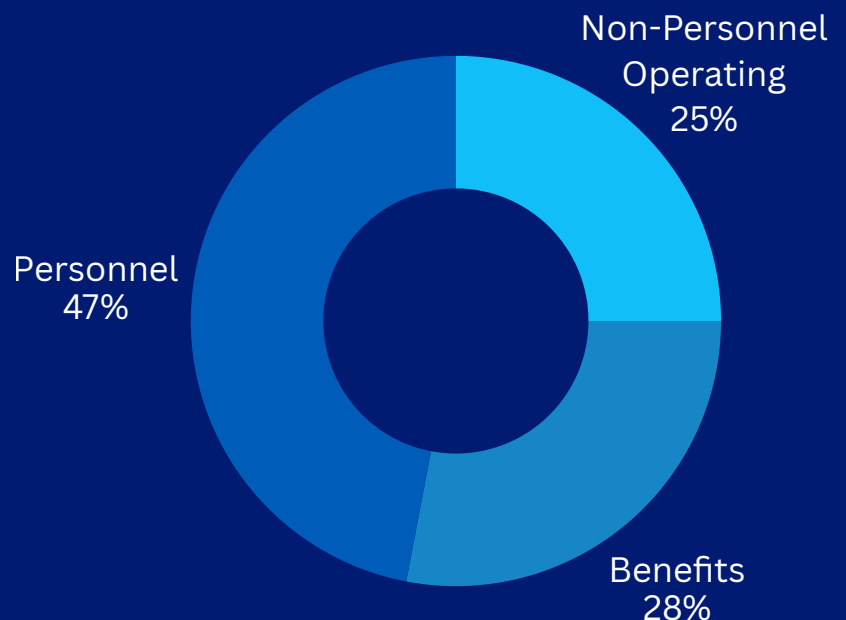
Non-Personnel Operating

\$5,306,636

Personnel

\$3,202,054

Benefits



*In 2025, DCHD demonstrated **strong fiscal stewardship** across diverse funding streams, **sustaining core programs** in a challenging year with **significant fiscal uncertainty**.*

Note: numbers are subject to change as accounting is finalized

IMPACT

DELAWARE COUNTY HEALTH DEPARTMENT
IN THE COMMUNITY

20 25

